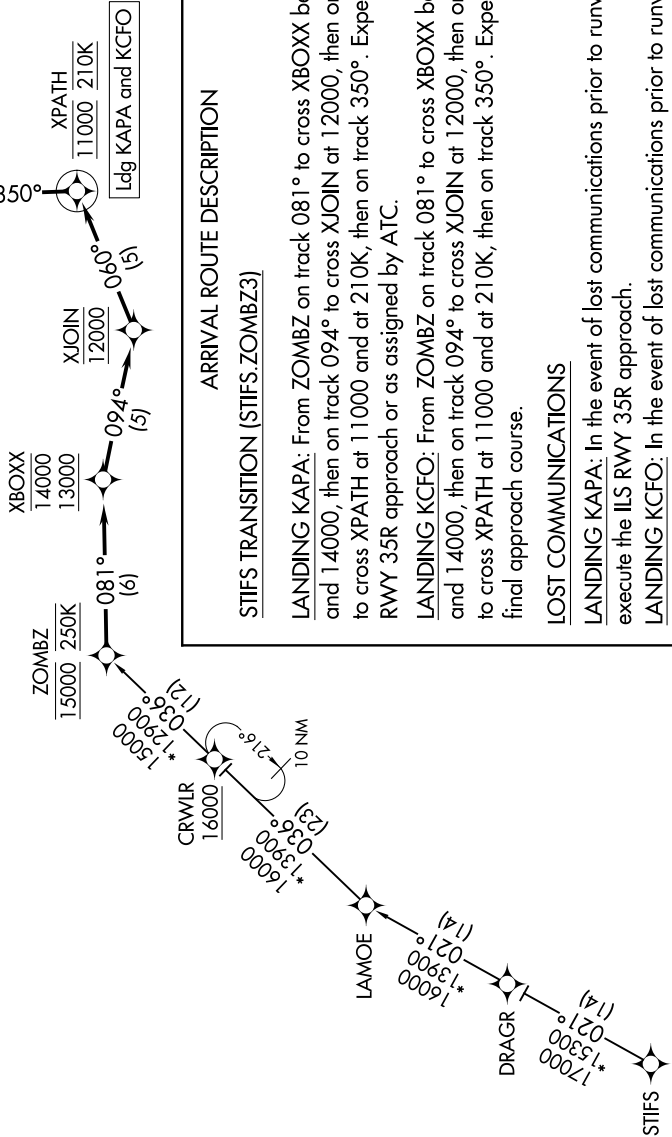


SW-1, 10 SEP 2020 to 08 OCT 2020

DENVER APP CON
128.45 251.075
APA ATIS
120.3
CFO ATIS
119.025
CENTENNIAL TOWER
118.9
FRONT RANGE TOWER *
120.2

NOTE: RADAR required.
NOTE: RNAV 1.
NOTE: DME/DME/IRU or GPS required.
NOTE: Turbojet aircraft only.
NOTE: Expect runway assignment on initial contact with Denver TRACON.



ARRIVAL ROUTE DESCRIPTION

STIFS TRANSITION (STIFS.ZOMBZ3)

LANDING KAPA: From ZOMBZ on track 081° to cross XBOXZ between 13000 and 14000, then on track 094° to cross XJOIN at 12000, then on track 060° to cross XPATH at 11000 and at 210K, then on track 350°. Expect ILS or LOC RWY 35R approach or as assigned by ATC.

LANDING KCFO: From ZOMBZ on track 081° to cross XBOXZ between 13000 and 14000, then on track 094° to cross XJOIN at 12000, then on track 060° to cross XPATH at 11000 and at 210K, then on track 350°. Expect vectors to final approach course.

LOST COMMUNICATIONS

LANDING KAPA: In the event of lost communications prior to runway assignment, execute the ILS RWY 35R approach.

LANDING KCFO: In the event of lost communications prior to runway assignment, execute the ILS RWY 26 approach.

NOTE: Chart not to scale.

SW-1, 10 SEP 2020 to 08 OCT 2020