

ASPEN SEVEN DEPARTURE

AL-5889 (FAA)

ASPEN-PITKIN COUNTY/SARDY FIELD (A5E)
ASPEN, COLORADO

**TOP ALTITUDE:
16000**

ATIS
120.4
CLNC DEL
123.75
GND CON
121.9
ASPEN TOWER*
118.85 (CTAF) 288.3
ASPEN DEP CON*
123.8 288.3
DENVER CENTER
119.85 363.15
UNICOM
122.95

MEEKER
115.2 EKR
Chan 99
N40°04.05' - W107°55.50'
L-9-11, H-3

MILE HIGH
114.7 DVV
Chan 94
N39°53.68' - W104°37.46'
L-10, H-3-5

SNOW
109.2 SXW
Chan 29
N39°37.77'
W106°59.47'
L-9

KREMMLING
113.8 RLG
Chan 85
N40°00.16' - W106°26.55'
L-9-11, H-3-5

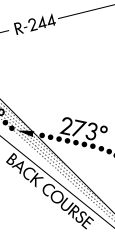
RIFLE
110.6 RIL
Chan 43
N39°31.70'
W107°43.18'
L-9

LINDZ
N39°23.33'
W107°09.48'
L-9

RED TABLE
113.0 DBL
Chan 77
N39°26.36'
W106°53.68'
L-9, H-3

FALCON
116.3 FQF
Chan 110
N39°41.41'
W104°37.26'
L-10, H-3-5

GRAND JUNCTION
112.4 JNC
Chan 71
N39°03.57' - W108°47.55'
L-9, H-3



LOCALIZER 108.5
I-PKN

BLACK FOREST
112.5 BRK
Chan 72
N38°56.67'
W104°38.01'
L-10, H-3-5

MONTRORSE
117.1 MTJ
Chan 118
N38°30.39' - W107°53.96'
L-9, H-3

BLUE MESA
114.9 HBU
Chan 96
N38°27.13'
W107°02.38'
L-9, H-3

PUEBLO
116.7 PUB
Chan 114
N38°17.66'
W104°25.77'
L-10, H-5

NOTE: This is a RADAR vector departure to assigned route/fix. Route depicted is for lost communications procedure only.
NOTE: Transponder required.
NOTE: Procedure not authorized at night.

TAKEOFF MINIMUMS

Rwy 15: NA - Terrain.
Rwy 33: 400-1 with minimum obstacle climb of 650' per NM to 13000, ATC climb of 840' per NM to 16000.

NOTE: Chart not to scale.

DEPARTURE ROUTE DESCRIPTION

TAKEOFF RUNWAY 33: Climbing right turn heading 348°, maintain 16000 or assigned altitude for RADAR vectors to assigned route/fix. Expect clearance to filed altitude 10 minutes after departure.

LOST COMMUNICATIONS: If no transmissions are received for one minute after departure, turn left heading 273° to intercept and proceed via the I-PKN NW course (outbound) to LINDZ INT/DBL R-244/13 DME, thence via assigned fix/route.

NOTE: I-PKN back course outbound is normal sensing.

ASPEN SEVEN DEPARTURE

SW-1, 10 SEP 2020 to 08 OCT 2020

SW-1, 10 SEP 2020 to 08 OCT 2020