

APP CRS	Rwy ldg	N/A
166°	TDZE	N/A
	Apt Elev	7837

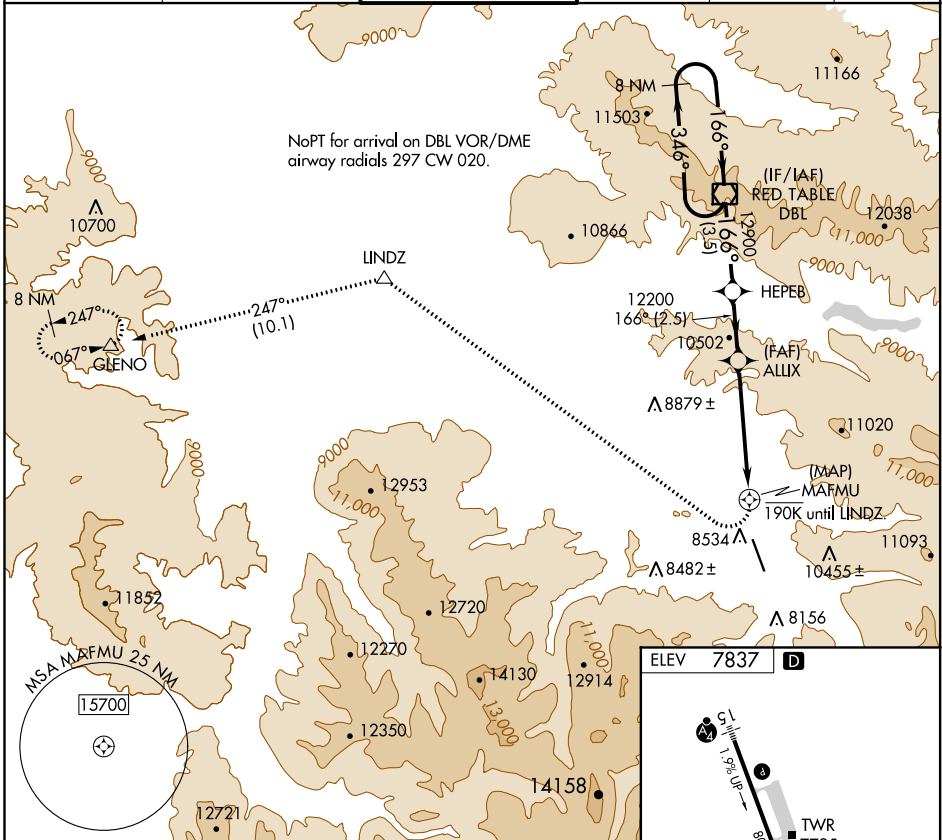
# RNAV (GPS)-F

ASPEN-PITKIN COUNTY/SARDY FIELD (ASE)

**⚠** When local altimeter setting not received, procedure NA.  
**⚠** DME/DME RNP-0.3 NA. Visibility reduction by helicopters NA. Procedure NA at night.  
**⚠** -24°C

**MISSED APPROACH:** Climbing right turn to 14000 direct LINDZ and on track 247° to GLENO and hold.

ATIS	ASPEN APP CON *	ASPEN TOWER *	GND CON	CLNC DEL	UNICOM
120.4	123.8 288.3	118.85 (CTAF) 0 288.3	121.9	123.75	122.95

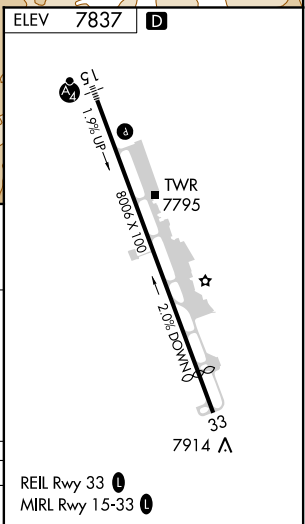
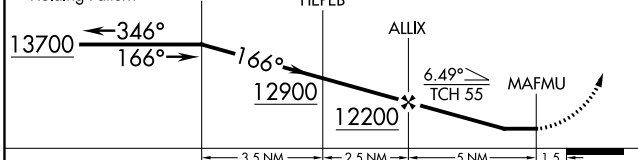


SW-1, 10 SEP 2020 to 08 OCT 2020

SW-1, 10 SEP 2020 to 08 OCT 2020

VGSI and descent angles not coincident (VGSI Angle 3.50/TCH 56).

14000	LINDZ	tr 247°	GLENO
	△		△



CATEGORY	A	B	C	D
CIRCLING	10200-1 <sup>3</sup> / <sub>4</sub>	2363 (2400-1 <sup>3</sup> / <sub>4</sub> )	10220-3 2383 (2400-3)	NA