

WAAS CH <b>58114</b> <b>W32A</b>	APP CRS <b>328°</b>	Rwy Idg TDZE Apt Elev	<b>5004</b> <b>99</b> <b>100</b>
--	------------------------	-----------------------------	--

# RNAV (GPS) RWY 32

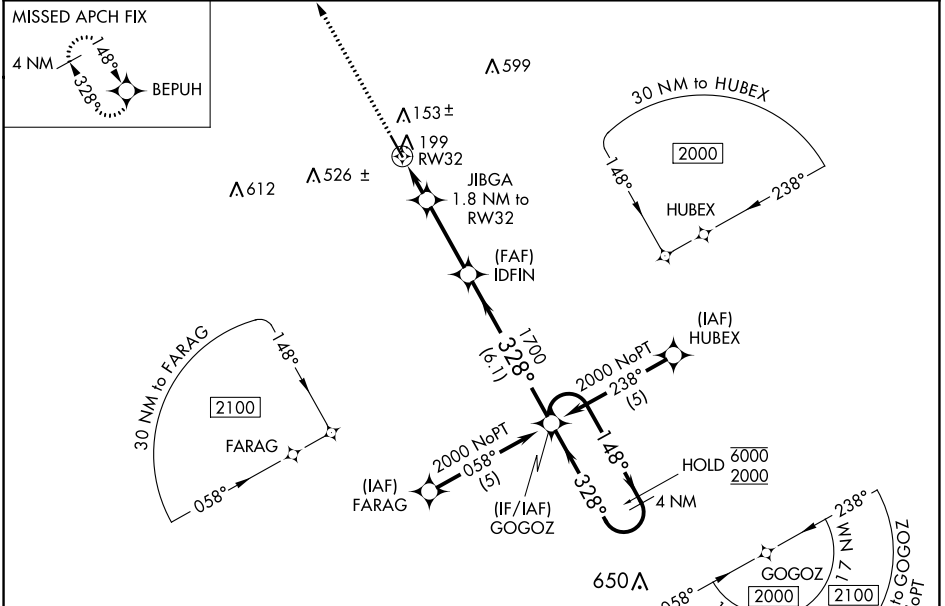
WHARTON RGNL (A.R.M)

RNP APCH.

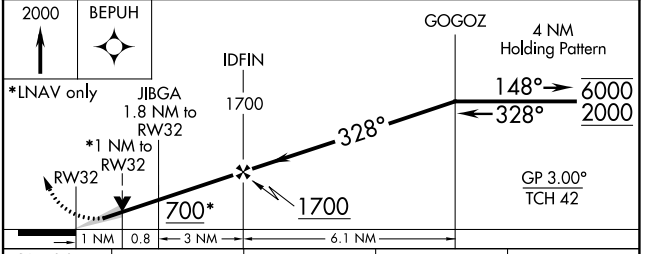
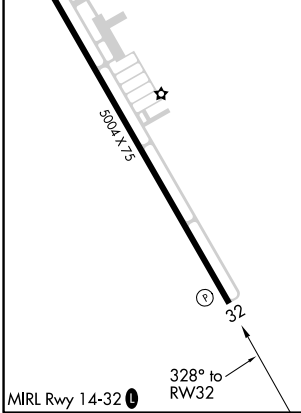
▼ For uncompensated Baro-VNAV systems, LNAV/VNAV NA below -15°C or above 54°C.

MISSED APPROACH: Climb to 2000 direct BEPUH and hold.

AWOS-3 <b>118.475</b>	HOUSTON CENTER <b>128.6 360.8</b>	UNICOM <b>122.7 (CTAF) ①</b>
--------------------------	--------------------------------------	---------------------------------



ELEV 100	TDZE 99
----------	---------



CATEGORY	A	B	C	D
LPV DA		349-1	250 (300-1)	NA
LNAV/VNAV DA		399-1	300 (300-1)	NA
LNAV MDA		460-1	361 (400-1)	NA

SC-5, 10 SEP 2020 to 08 OCT 2020

SC-5, 10 SEP 2020 to 08 OCT 2020