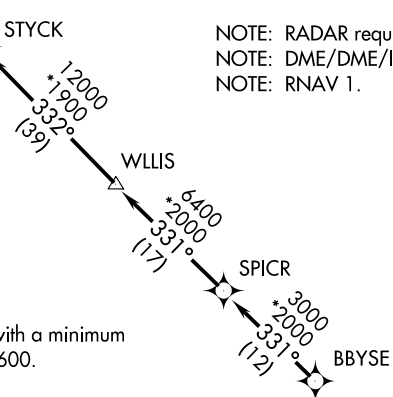
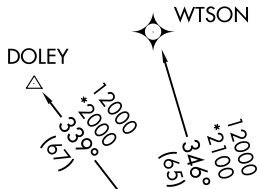


# STYCK SEVEN DEPARTURE (RNAV)

**TOP ALTITUDE:  
ASSIGNED BY ATC**

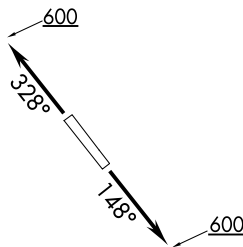
AWOS-3  
118.475  
CTAF  
122.7  
HOUSTON DEP CON  
128.6 360.85



NOTE: RADAR required.  
NOTE: DME/DME/IRU or GPS required.  
NOTE: RNAV 1.

### TAKEOFF MINIMUMS

Rwys 14, 32: Standard with a minimum climb of 500' per NM to 600.



NOTE: Chart not to scale.

### DEPARTURE ROUTE DESCRIPTION

TAKEOFF RWY 14: Climb heading 148° to 600 for RADAR vectors to BBYSE, thence. . . .

TAKEOFF RWY 32: Climb heading 328° to 600 for RADAR vectors to BBYSE, thence. . . .

. . . on track 331° to SPICR, then on track 331° to WLLIS, then on track 332° to STYCK, then on (transition). Maintain ATC assigned altitude. Expect filed altitude 10 minutes after departure.

DOLEY TRANSITION (STYCK7.DOLEY)

WTSON TRANSITION (STYCK7.WTSON)

# STYCK SEVEN DEPARTURE (RNAV)