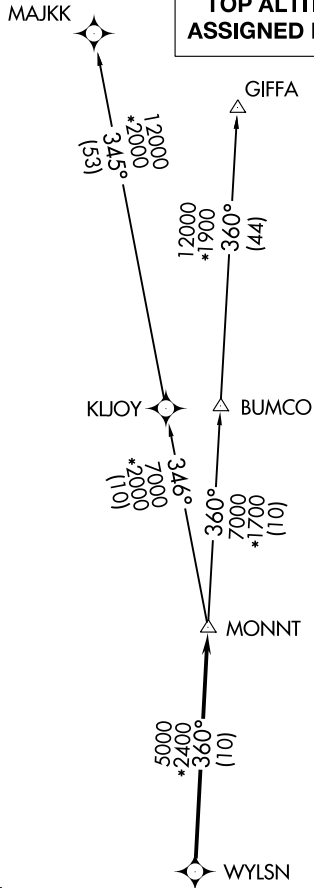


WYLSN SEVEN DEPARTURE (RNAV)

HOUSTON DEP CON
128.6 360.85

NOTE: RADAR required.
NOTE: DME/DME/IRU or GPS required.
NOTE: RNAV 1.

TAKEOFF MINIMUMS
Rwy 14, 32: Standard with minimum
climb of 500' per NM to 600.



**TOP ALTITUDE:
ASSIGNED BY ATC**

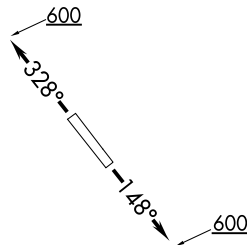
DEPARTURE ROUTE DESCRIPTION

TAKEOFF RWY 14: Climb heading 148° to 600 for RADAR vectors to WYLSN, thence. . . .

TAKEOFF RWY 32: Climb heading 328° to 600 for RADAR vectors to WYLSN, thence. . . .

. . . .on track 360° to MONNT, then on (transition). Maintain ATC assigned altitude. Expect filed altitude 10 minutes after departure.

GIFFA TRANSITION (WYLSN7.GIFFA)
MAJKK TRANSITION (WYLSN7.MAJKK)



NOTE: Chart not to scale.

WYLSN SEVEN DEPARTURE (RNAV)