

# AKUNA EIGHT DEPARTURE (RNAV)

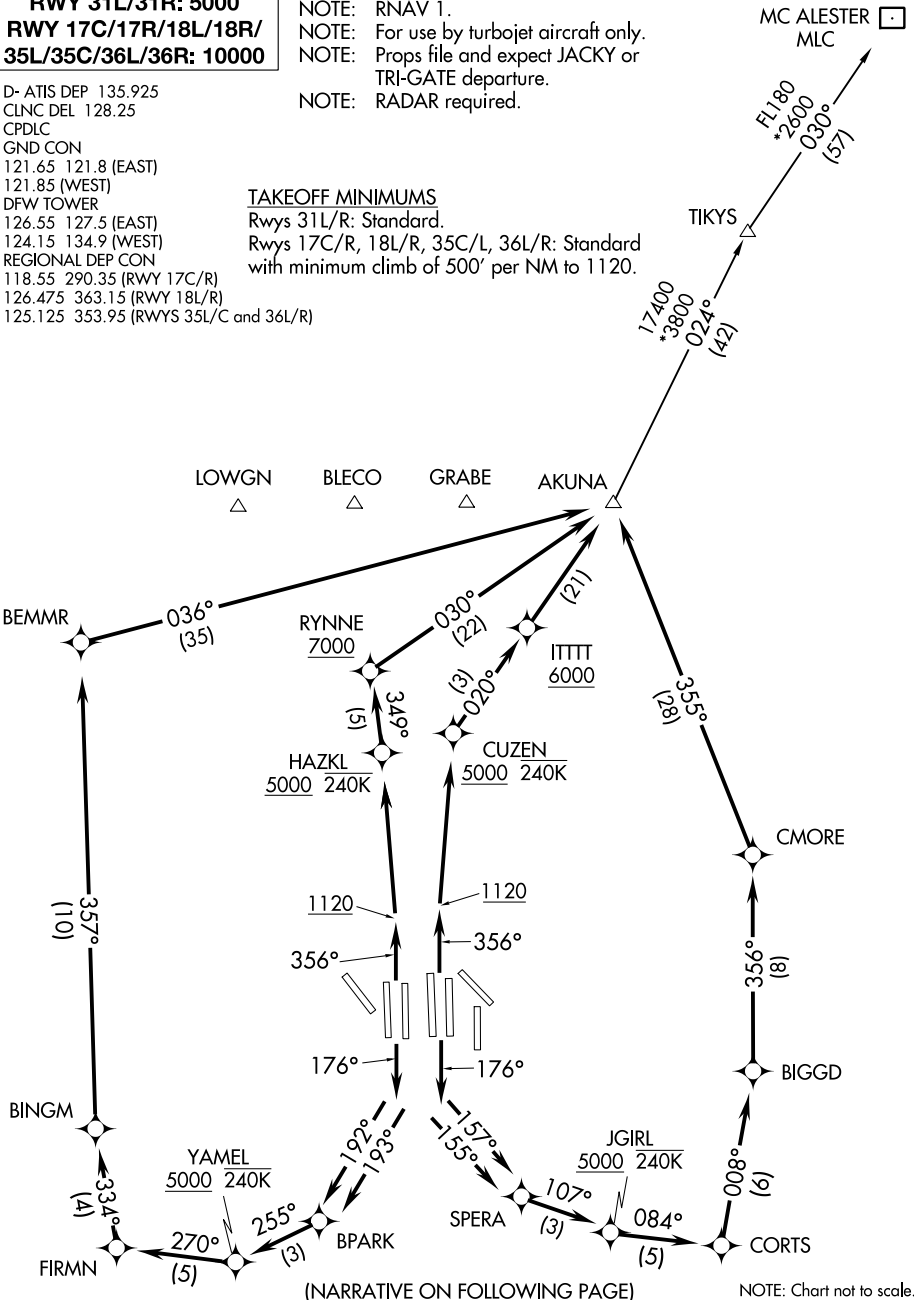
**TOP ALTITUDE:**  
**RWY 31L/31R: 5000**  
**RWY 17C/17R/18L/18R/**  
**35L/35C/36L/36R: 10000**

- NOTE: DME/DME/IRU or GPS required.
- NOTE: RNAV 1.
- NOTE: For use by turbojet aircraft only.
- NOTE: Props file and expect JACKY or TRI-GATE departure.
- NOTE: RADAR required.

D- ATIS DEP 135.925  
 CLNC DEL 128.25  
 CPDLC  
 GND CON  
 121.65 121.8 (EAST)  
 121.85 (WEST)  
 DFW TOWER  
 126.55 127.5 (EAST)  
 124.15 134.9 (WEST)  
 REGIONAL DEP CON  
 118.55 290.35 (RWY 17C/R)  
 126.475 363.15 (RWY 18L/R)  
 125.125 353.95 (RWYS 35L/C and 36L/R)

### TAKEOFF MINIMUMS

Rwys 31L/R: Standard.  
 Rwys 17C/R, 18L/R, 35C/L, 36L/R: Standard  
 with minimum climb of 500' per NM to 1120.



SC-2, 10 SEP 2020 to 08 OCT 2020

SC-2, 10 SEP 2020 to 08 OCT 2020

(NARRATIVE ON FOLLOWING PAGE)

NOTE: Chart not to scale.

# AKUNA EIGHT DEPARTURE (RNAV)