

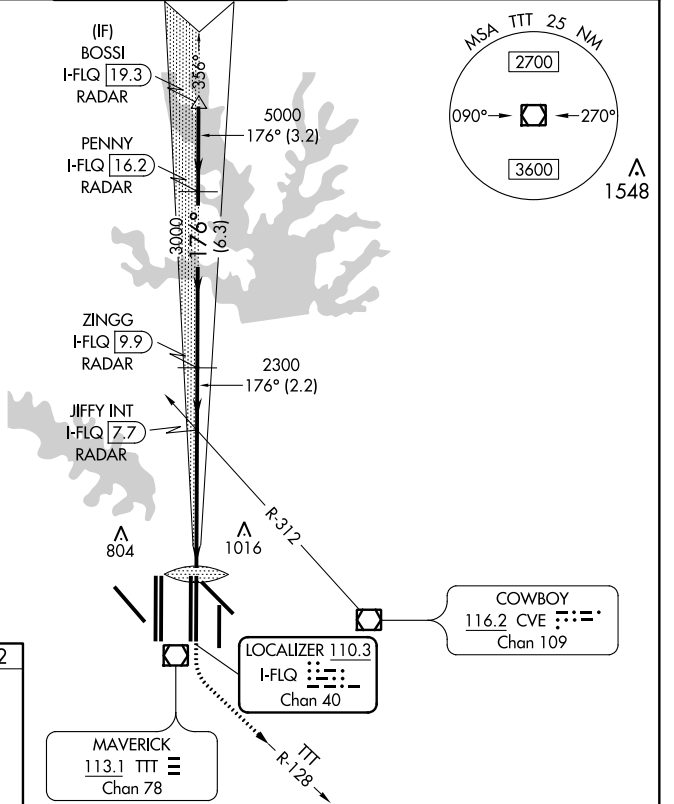
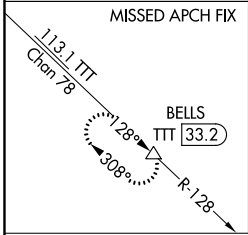
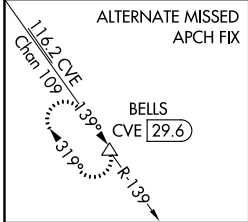
LOC/DME I-FLQ 110.3	APP CRS 176°	Rwy ldg 13400 TDZE 562 Apt Elev 607
Chan 40		

CONVERGING ILS RWY 17C

DALLAS-FORT WORTH INTL (DFW)

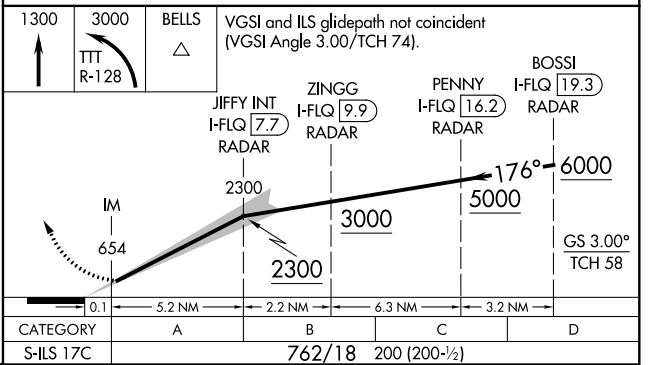
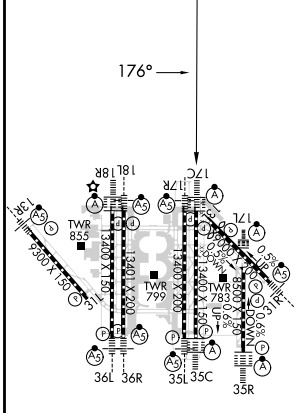
<p>▼ DME or RADAR required. Simultaneous approach authorized with Converging ILS Rwy 13R.</p>		<p>ALSF-2 </p>	<p>MISSED APPROACH: Climb to 3000 then climbing left turn to 3000 on TTT VOR/DME R-128 to BELLS/TTT 33.2 DME and hold.</p>	
--	--	--------------------	--	--

D-ATIS ARR 123.775 DEP 135.925	REGIONAL APP CON 127.075	DFW TOWER 126.55 127.5 EAST 124.15 134.9 WEST	GND CON 121.65 121.8 EAST 121.85 WEST	CLNC DEL 128.25	CPDLC
--	------------------------------------	---	---	---------------------------	-------



RADAR REQUIRED

ELEV 607	D	TDZE 562
----------	---	----------



SC-2, 10 SEP 2020 to 08 OCT 2020

SC-2, 10 SEP 2020 to 08 OCT 2020