

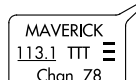
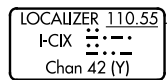
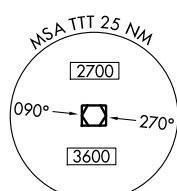
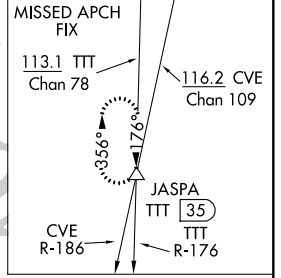
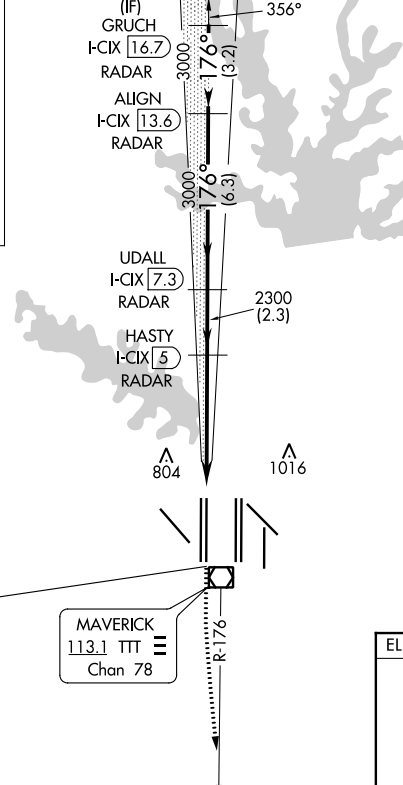
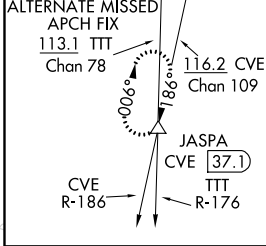
LOC/DME I-CIX 110.55	APP CRS 176°	Rwy Idg 13401
Chan 42 (Y)		TDZE 602
		Apt Elev 607

CONVERGING ILS RWY 18L

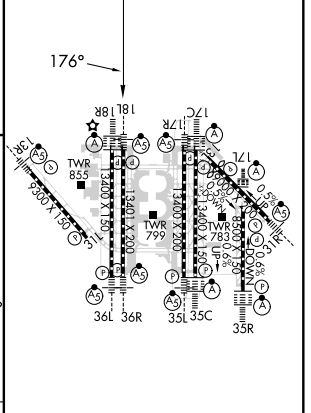
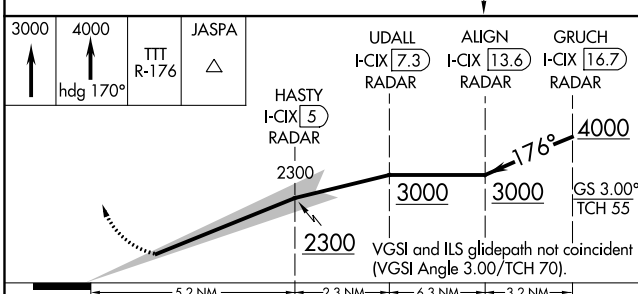
DALLAS-FORT WORTH INTL (DFW)

DME and RADAR required. MALSR MISSED APPROACH: Climb to 3000, then climb to 4000 on heading 170° and TTT VOR/DME R-176 to JASPA/TTT 35 DME and hold.

Simultaneous approach authorized with CONVERGING ILS RWY 13R.		DFW TOWER		GND CON	CLNC DEL	CPDLC
D-ATIS ARR 123.775 DEP 135.925	REGIONAL APP CON 118.425	126.55 EAST 124.15 WEST	127.5 EAST 134.9 WEST	121.65 EAST 121.85 WEST	128.25	



ELEV 607	D TDZE 602
----------	-------------------



CATEGORY	A	B	C	D
S-ILS 18L	802/18	200 (200-1/2)		

HIRL all Rwys
REIL Rws 13L and 31L
TDZ/CL all Rws except 13L and 31L

SC-2, 10 SEP 2020 to 08 OCT 2020

SC-2, 10 SEP 2020 to 08 OCT 2020