

LOC/DME I-BXN 111.9 Chan 56	APP CRS 356°	Rwy Idg TDZE Apt Elev 13400 588 607
---	------------------------	---

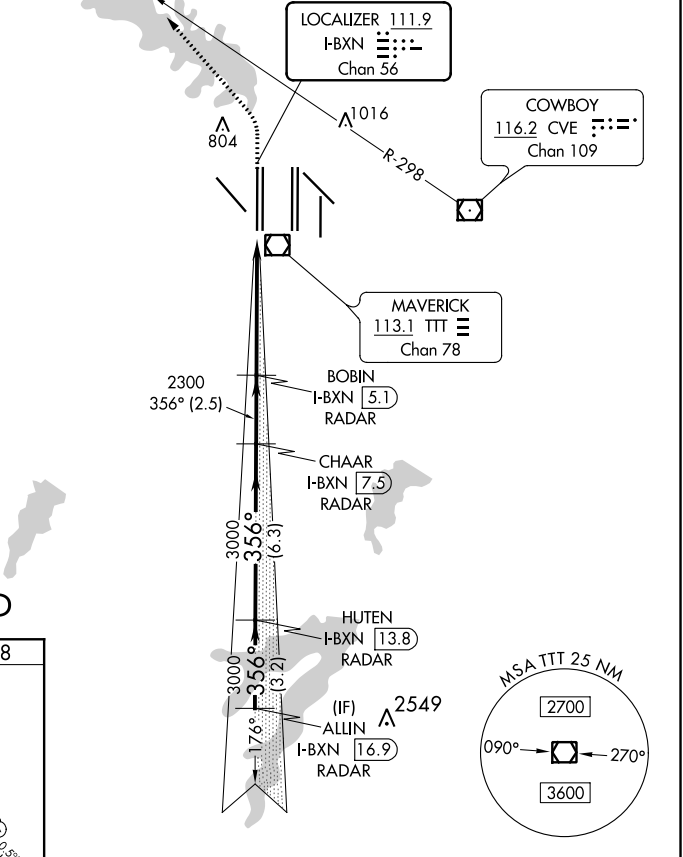
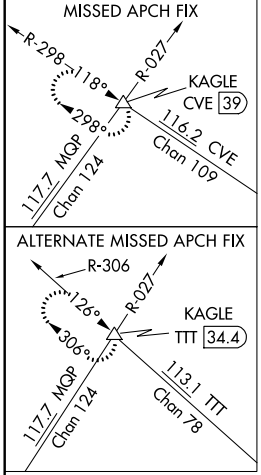
CONVERGING ILS RWY 36L

DALLAS-FORT WORTH INTL (DFW)

▼ DME or RADAR required. Simultaneous approach authorized with CONVERGING ILS RWY 31R.

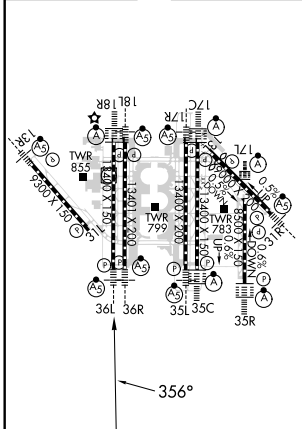
MALSR MISSED APPROACH: Climb to 1100 then climbing left turn to 3000 on heading 315° and CVE VOR/DME R-298 to KAGLE INT/CVE VOR/DME 39 DME and hold.

D-ATIS ARR 123.775 DEP 135.925	REGIONAL APP CON 118.425	DFW TOWER 126.55 127.5 EAST 124.15 134.9 WEST	GND CON 121.65 121.8 EAST 121.85 WEST	CLNC DEL 128.25	CPDLC
--	------------------------------------	---	---	---------------------------	-------



RADAR REQUIRED

ELEV 607 **D** TDZE 588



1100	3000	KAGLE	ALLIN
↑	hdg 315°	CVE R-298	I-BXN 16.9 RADAR
↑	↑	△	BOBIN I-BXN 5.1 RADAR
			CHAAR I-BXN 7.5 RADAR
			HUTEN I-BXN 13.8 RADAR
VGSi and ILS glidepath not coincident (VGSi Angle 3.00/TCH 72).			
	2300	3000	3000
	2300	3000	4000
	5.2 NM	2.5 NM	6.3 NM
			3.2 NM
CATEGORY	A	B	C
S-ILS 36L	788/18 200 (200-1/2)		

CONVERGING ILS RWY 36L

SC-2, 10 SEP 2020 to 08 OCT 2020

SC-2, 10 SEP 2020 to 08 OCT 2020