

LOC/DME I-FJN <b>110.55</b> Chan <b>42 (Y)</b>	APP CRS <b>356°</b>	Rwy Idg TDZE Apt Elev	<b>13401</b> <b>581</b> <b>607</b>
--	------------------------	-----------------------------	--

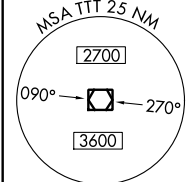
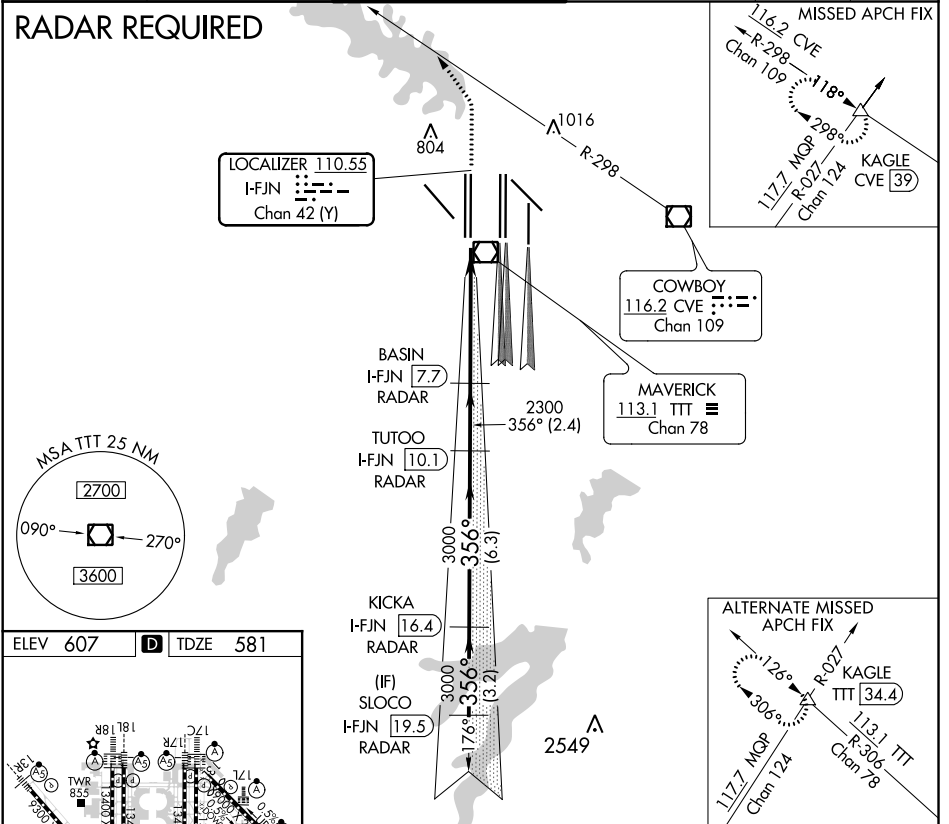
# CONVERGING ILS RWY 36R

DALLAS-FORT WORTH INTL (DFW)

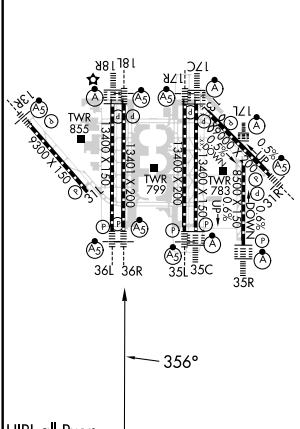
D-ATIS ARR <b>123.775</b> DEP <b>135.925</b>	REGIONAL APP CON <b>118.425</b>	DFW TOWER <b>126.55 127.5</b> EAST <b>124.15 134.9</b> WEST		GND CON <b>121.65 121.8</b> EAST <b>121.85</b> WEST	CLNC DEL <b>128.25</b>	CPDLC
		Simultaneous approach authorized with Converging ILS Rwy 31R. DME or Radar required.				



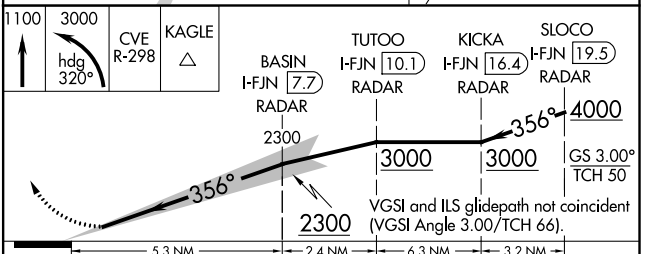
MISSED APPROACH: Climb to 1100, then climbing left turn to 3000 on heading 320° and CVE VOR/DME R-298 to KAGLE INT/CVE 39 DME and hold.



ELEV <b>607</b>	<b>D</b>	TDZE <b>581</b>
-----------------	----------	-----------------



HIRL all Rwy's  
REIL Rwy's 13L and 31L  
TDZ/CL all Rwy's except 13L and 31L



CATEGORY	A	B	C	D
S-ILS 36R	781/18		200 (200-½)	

SC-2, 10 SEP 2020 to 08 OCT 2020

SC-2, 10 SEP 2020 to 08 OCT 2020