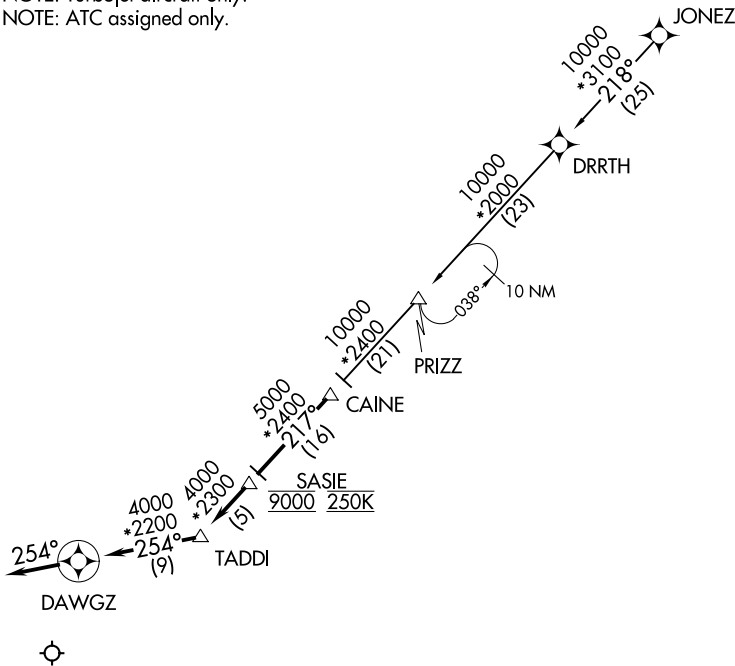


DAWGZ TWO ARRIVAL (RNAV)

D-ATIS ARR
123.775
REGIONAL APP CON
125.025 263.025

- NOTE: RADAR required.
- NOTE: RNAV 1.
- NOTE: DME/DME/IRU or GPS required.
- NOTE: Turbojet aircraft only.
- NOTE: ATC assigned only.



NOTE: Chart not to scale.

ARRIVAL DESCRIPTION

JONEZ TRANSITION (JONEZ.DAWGZ2)

From CAINE on track 217° to cross SASIE at 9000 and at 250K, then on track 217° to TADDI, then on track 254° to DAWGZ, then on track 254°. Expect RADAR vectors to final approach course.