

LOC/DME I-RRA 110.9 Chan 46	APP CRS 311°	Rwy Idg TDZE Apt Elev	8373 523 607
---	------------------------	-----------------------------	---

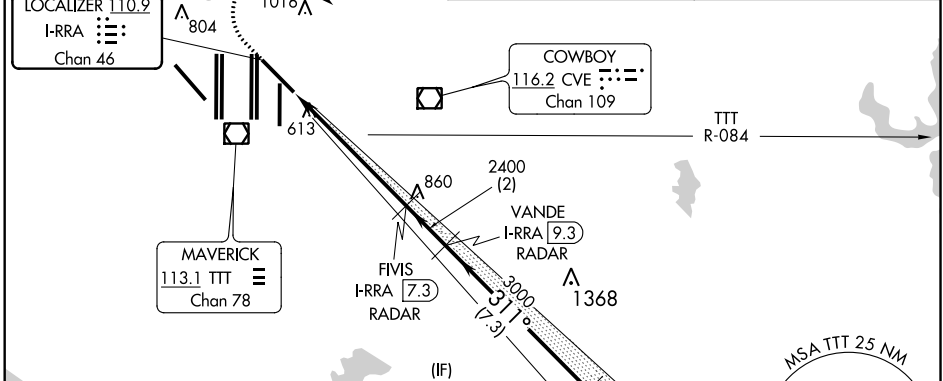
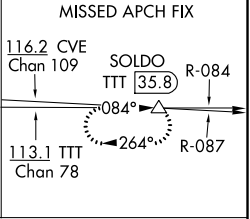
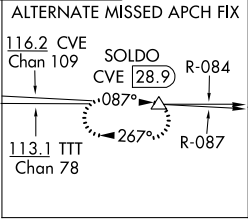
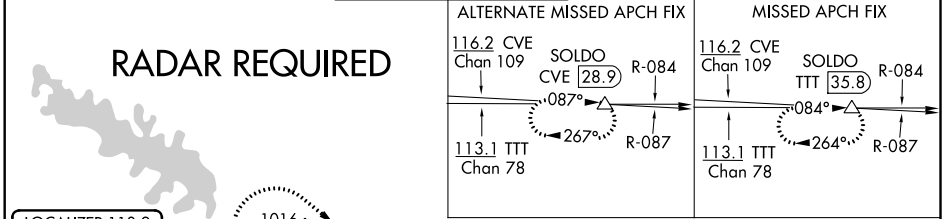
ILS RWY 31R (SA CAT I & CAT II)

DALLAS-FORT WORTH INTL (DFW)

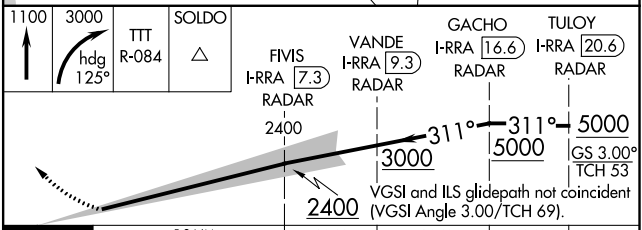
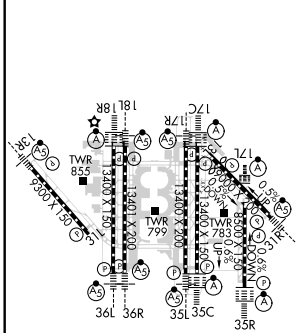
Simultaneous approach authorized. DME required.
SA Cat I: Requires specific OPSPEC, MSPEC, or LOA approval and use of HUD to DH. SA Cat II: Reduced lighting: Requires specific OPSPEC, MSPEC, or LOA approval and use of autoland or HUD to touchdown.

MALS
MISSED APPROACH: Climb to 1100 then climbing right turn to 3000 on heading 125° and TTT VOR/DME R-084 to SOLDO/TTT 35.8 DME and hold.

D-ATIS ARR 123.775 DEP 135.925	REGIONAL APP CON 135.5 125.2	DFW TOWER 126.55 127.5 EAST 124.15 134.9 WEST	GND CON 121.65 121.8 EAST 121.85 WEST	CLNC DEL 128.25	CPDLC
--	--	---	---	---------------------------	-------



ELEV 607	D	TDZE 523
-----------------	----------	-----------------



1100	3000	TTT R-084	SOLDO
↑	hdg 125°	△	
5.8 NM		2 NM	7.3 NM
4 NM			
CATEGORY	A	B	C
S-ILS 31R	SA CAT I	RA 176/14 150 DA 673	
S-ILS 31R	SA CAT II	RA 121/12 100 DA 623	

SA CATEGORY I & II ILS SPECIAL AIRCREW & AIRCRAFT CERTIFICATION REQUIRED

HIRL all Rwys
REIL Rwy 13L and 31L
TDZ/CL all Rwy except 13L and 31L

SC-2, 10 SEP 2020 to 08 OCT 2020

SC-2, 10 SEP 2020 to 08 OCT 2020