

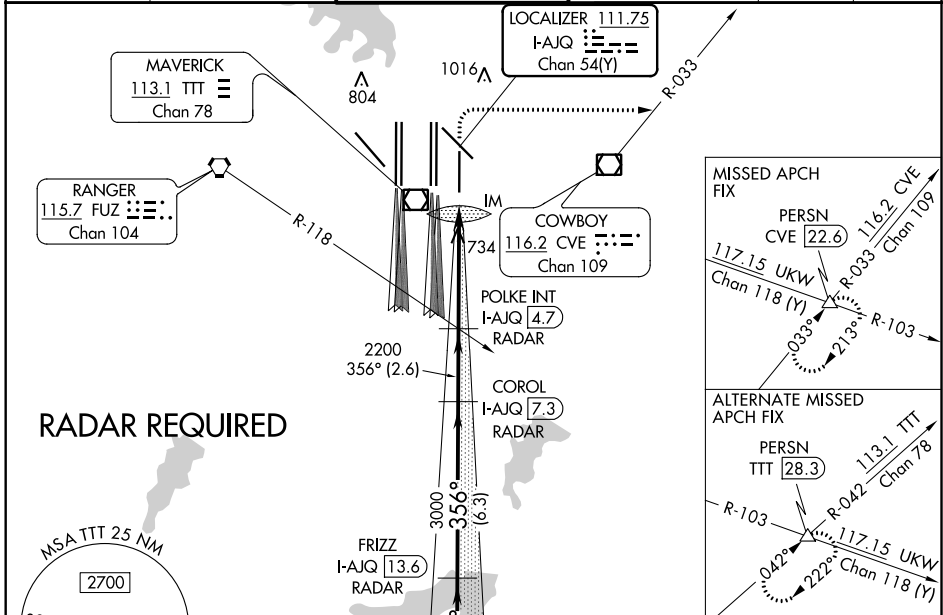
| | | |
|--|------------------------|--|
| LOC/DME I-AJQ 111.75 Chan 54(Y) | APP CRS 356° | Rwy Idg TDZE Apt Elev 8500 575 607 |
|--|------------------------|--|

ILS RWY 35R (CAT II & III)

DALLAS-FORT WORTH INTL (DFW)

| | | |
|---|---------|---|
| Simultaneous approach authorized with Rwy 36L/R and Rwy 35L/C. DME required. | ALSIF-2 | MISSED APPROACH: Climb to 1040 then climbing right turn to 3000 on heading 090° and CVE VOR/DME R-033 to PERSN/CVE 22.6 DME and hold. |
| | | |

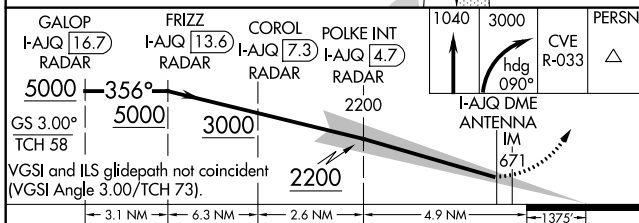
| | | | | | |
|--|----------------------------------|---|---|---------------------------|-------|
| D-ATIS ARR 123.775 DEP 135.925 | REGIONAL APP CON 119.4 | DFW TOWER 126.55 127.5 EAST 124.15 134.9 WEST | GND CON 121.65 121.8 EAST 121.85 WEST | CLNC DEL 128.25 | CPDLC |
|--|----------------------------------|---|---|---------------------------|-------|



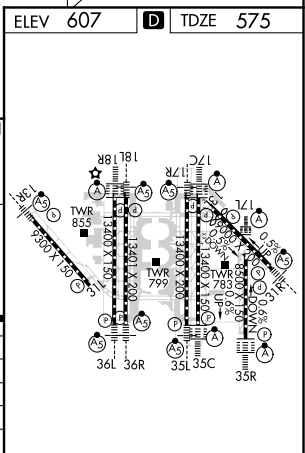
SC-2, 10 SEP 2020 to 08 OCT 2020

SC-2, 10 SEP 2020 to 08 OCT 2020

| | |
|----------|-------------------|
| ELEV 607 | D TDZE 575 |
|----------|-------------------|



| | | | | |
|---|--------------------------------|-------------------------------|-----------------------------------|--|
| GALOP I-AJQ 16.7 RADAR 5000 — 356° — 5000 GS 3.00° TCH 58 | FRIZZ I-AJQ 13.6 RADAR 3000 | COROL I-AJQ 7.3 RADAR 2200 | POLKE INT I-AJQ 4.7 RADAR 1040 | PERSN 3000 CVE R-033 I-AJQ DME ANTENNA IM 671 |
| VGS1 and ILS glidepath not coincident (VGS1 Angle 3.00/TCH 73). | | | | |
| 3.1 NM 6.3 NM 2.6 NM 4.9 NM 1375' | | | | |
| CATEGORY | A | B | C | D |
| S-ILS 35R | | CAT II RA 94/12 | 100 DA 675 | |
| S-ILS 35R | | CAT IIIa | RVR 07 | |
| S-ILS 35R | | CAT IIIb | RVR 06 | |
| S-ILS 35R | | CAT IIIc | NA | |



CATEGORY II & III ILS - SPECIAL AIRCREW & AIRCRAFT CERTIFICATION REQUIRED

HIRL all Rwys
 REIL Rwys 13L and 31L
 TDZ/CL all Rwys except 13L, and 31L