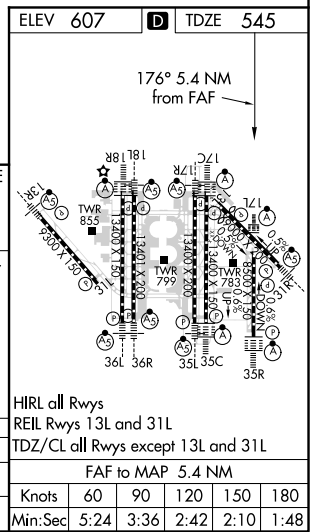
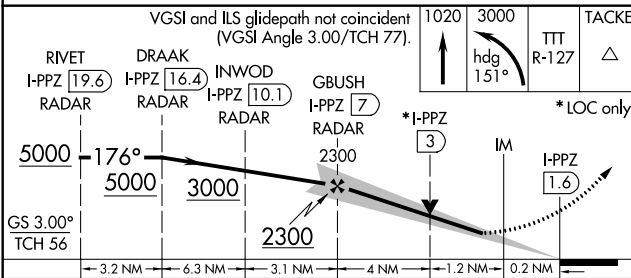
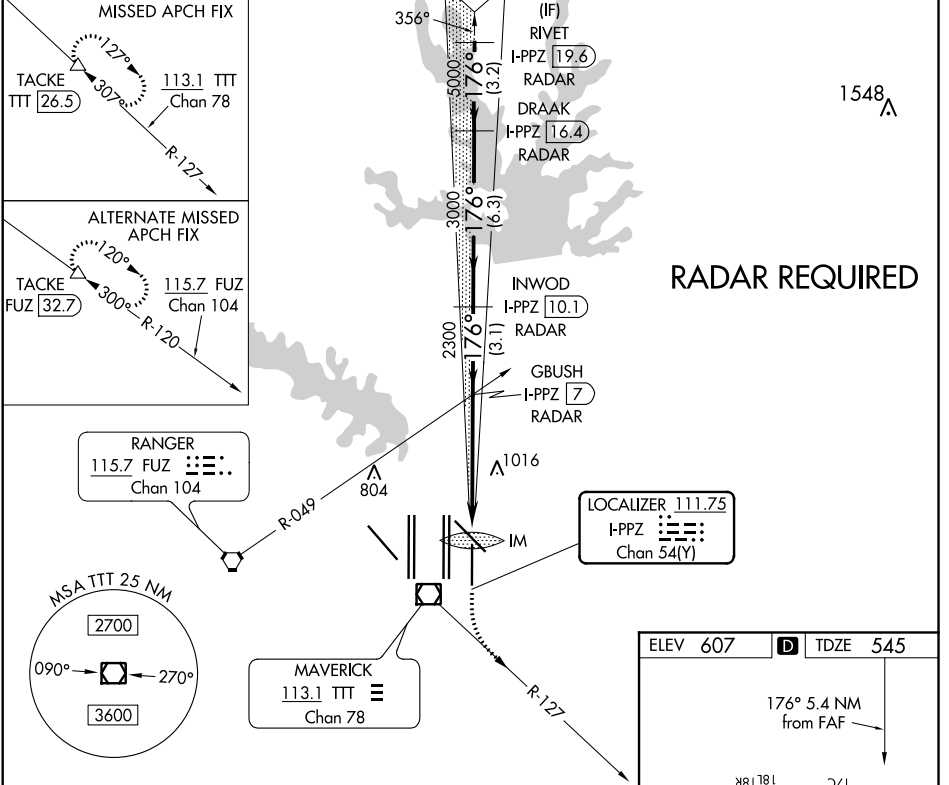


LOC/DME I-PPZ <b>111.75</b> Chan <b>54</b> (Y)	APP CRS <b>176°</b>	Rwy Idg <b>8500</b> TDZE <b>545</b> Apt Elev <b>607</b>
--	------------------------	---

# ILS or LOC RWY 17L

DALLAS-FORT WORTH INTL (DFW)

<p>Simultaneous approach authorized with Rwy 17C/R and Rwy 18L/R. DME required.</p>	<p>ALSF-2</p>	<p>MISSED APPROACH: Climb to 1020 then climbing left turn to 3000 on heading 151° and TTT VOR/DME R-127 to TACKE/TTT 26.5 DME and hold.</p>			
<p>D-ATIS ARR <b>123.775</b> DEP <b>135.925</b></p>	<p>REGIONAL APP CON <b>119.4</b></p>	<p>DFW TOWER <b>126.55 127.5 EAST</b> <b>124.15 134.9 WEST</b></p>	<p>GND CON <b>121.65 121.8 EAST</b> <b>121.85 WEST</b></p>	<p>CLNC DEL <b>128.25</b></p>	<p>CPDLC</p>



CATEGORY	A	B	C	D
S-ILS 17L	745/18 200 (200-½)			
S-LOC 17L	1040/24	495 (500-½)	1040/50	495 (500-1)

SC-2, 10 SEP 2020 to 08 OCT 2020

SC-2, 10 SEP 2020 to 08 OCT 2020