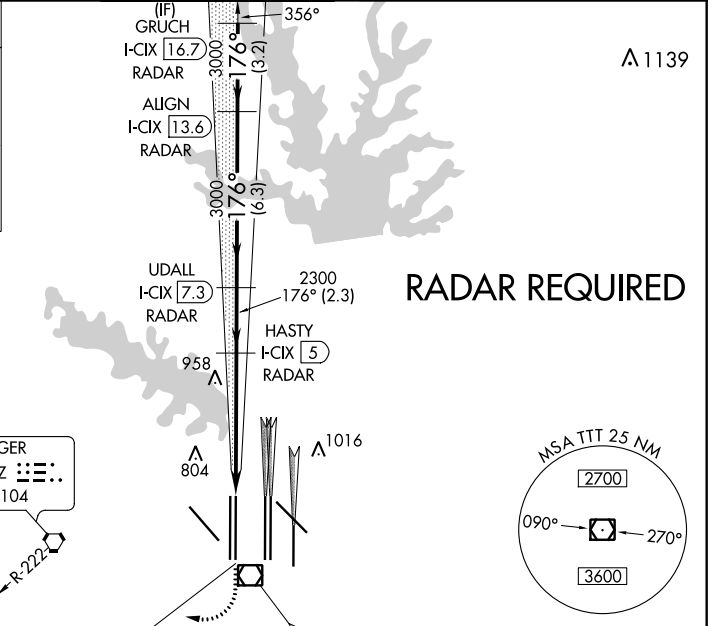
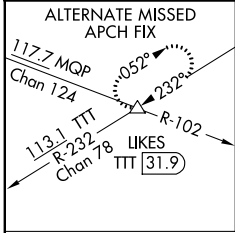


LOC/DME I-CIX 110.55 Chan 42 (Y)	APP CRS 176°	Rwy 18L Idg 13401 TDZE 602 Apt Elev 607	Rwy 18R Idg 13400 TDZE 607 Apt Elev 607
--	------------------------	--	--

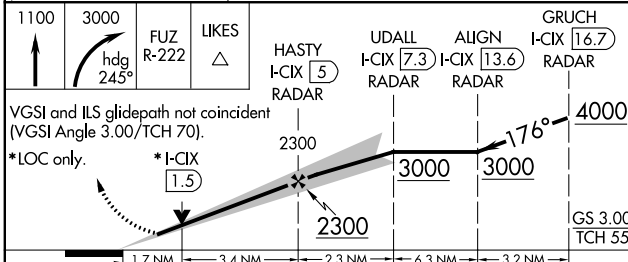
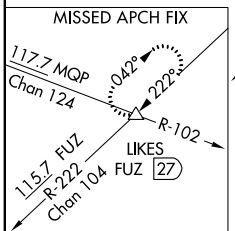
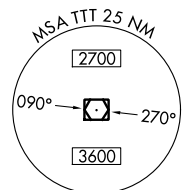
ILS or LOC RWY 18L

DALLAS-FORT WORTH INTL (DFW)

<p>▼ Simultaneous approach authorized with Rwy 17L/C/R. For inop MALSR/ALSF, increase S-LOC 18L Cat C/D and sidestep 18R Cat C visibility to 1 1/4 mile. Inop table does not apply to sidestep 18R Cats A and B. DME or RADAR required.</p>		Rwy 18L MALSR 	Rwy 18R ALSF-2 	MISSED APPROACH: Climb to 1100, then climbing right turn to 3000 on heading 245° and FUZ VORTAC R-222 to LKES INT/FUZ 27 DME and hold.		
D-ATIS ARR 123.775 DEP 135.925	REGIONAL APP CON 118.425	DFW TOWER 126.55 127.5 EAST 124.15 134.9 WEST		GND CON 121.65 121.8 EAST 121.85 WEST	CLNC DEL 128.25	CPDLC



RADAR REQUIRED



ELEV 607	D TDZE 602 18L TDZE 607 18R
176° 5.2 NM from FAF	
<p>HIRL all Rwys REIL Rwys 13L and 31L TDZ/CL all Rwys except 13L and 31L</p>	
FAF to MAP 5.2 NM	
Knots	60 90 120 150 180
Min:Sec	5:12 3:28 2:36 2:05 1:44

CATEGORY	A	B	C	D
S-ILS 18L		802/18	200 (200-1/2)	
S-LOC 18L	1220/24	618 (700-1/2)	1220-1 3/8	618 (700-1 3/8)
SIDESTEP 18R	1220/50	613 (700-1)	1220-1 3/8	1220-1 1/2
			613 (700-1 3/8)	613 (700-1 1/2)