

LOC/DME I-VYIN <b>111.9</b> Chan <b>56</b>	APP CRS <b>176°</b>	Rwy Idg TDZE Apt Elev	18R <b>13400</b> <b>607</b> <b>607</b>	18L <b>13401</b> <b>602</b> <b>607</b>
--	------------------------	-----------------------------	---	---

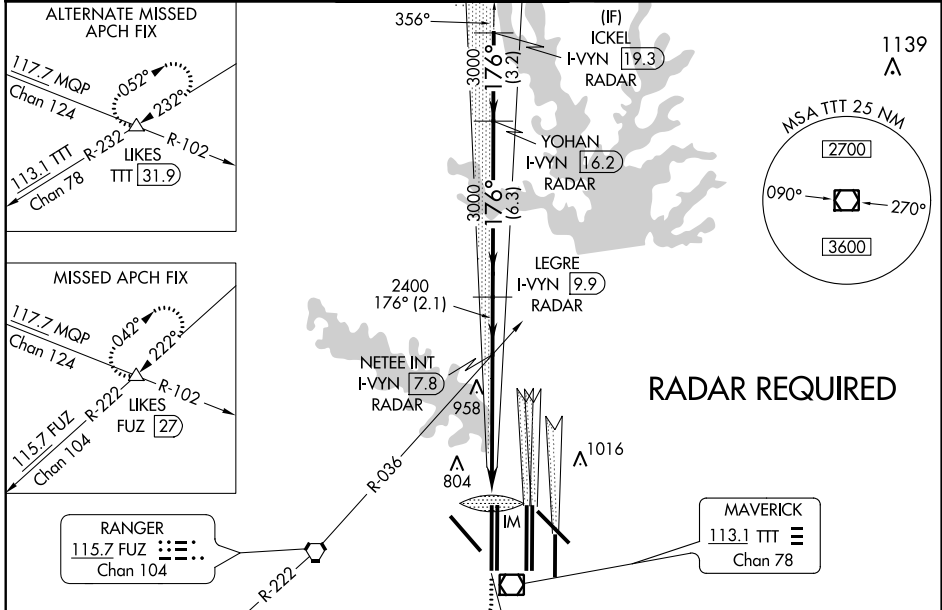
# ILS or LOC RWY 18R

DALLAS-FORT WORTH INTL (DFW)

▼ Inop table does not apply to Sidestep 18L Cats A and B. DME or RADAR required. Simultaneous approach authorized with Rwy 17 L/C/R. For inop ALSF/MALSR, increase S-LOC 18R Cat C/D and Sidestep 18L Cat C visibility to 1/4 mile.

Rwy 18R ALSF-2 <b>(A)</b>	Rwy 18L MALSR <b>(AS)</b>	MISSED APPROACH: Climb to 1100 then climbing right turn to 3000 on heading 250° and FUZ VORTAC R-222 to LIKES INT/FUZ VORTAC 27 DME and hold.
------------------------------	------------------------------	---

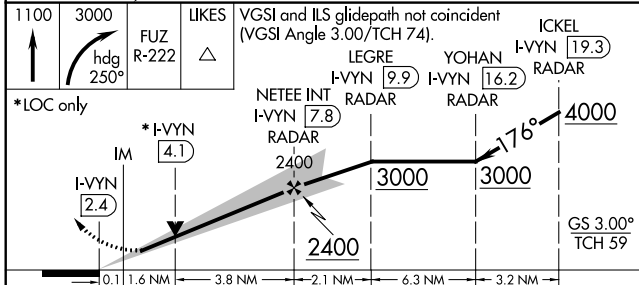
D-ATIS ARR <b>123.775</b> DEP <b>135.925</b>	REGIONAL APP CON <b>118.425</b>	DFW TOWER <b>126.55 127.5</b> EAST <b>124.15 134.9</b> WEST	GND CON <b>121.65 121.8</b> EAST <b>121.85</b> WEST	CLNC DEL <b>128.25</b>	CPDLC
--	------------------------------------	---	---	---------------------------	-------



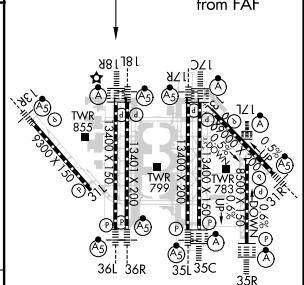
**RANGER** 115.7 FUZ Chan 104

**LOCALIZER** 111.9 I-VYIN Chan 56

**MAVERICK** 113.1 TTT Chan 78



ELEV 607	<b>D</b> TDZE 18R 607 TDZE 18L 602
176° 5.5 NM from FAF	



CATEGORY	A	B	C	D
S-ILS 18R		807/18	200 (200-1/2)	
S-LOC 18R	1220/24	613 (700-1/2)	1220-1 3/8	613 (700-1 3/8)
SIDESTEP 18L	1220/50	618 (700-1)	1220-1 3/8	1220-1 1/2
			618 (700-1 3/8)	618 (700-1 1/2)
HIRL all Rws				
REIL Rws 13L and 31L				
TDZ/CL all Rws except 13L and 31L				
FAF to MAP 5.5 NM				
Knots	60	90	120	150
Min:Sec	5:30	3:40	2:45	2:12
			1:50	

SC-2, 10 SEP 2020 to 08 OCT 2020

SC-2, 10 SEP 2020 to 08 OCT 2020