


LOC/DME I-BXN <b>111.9</b> Chan <b>56</b>	APP CRS <b>356°</b>	Rwy 36L Idg <b>13400</b> TDZE <b>588</b> Apt Elev <b>607</b>	Rwy 36R Idg <b>13401</b> TDZE <b>581</b> Apt Elev <b>607</b>
---	------------------------	--	--

# ILS or LOC RWY 36L

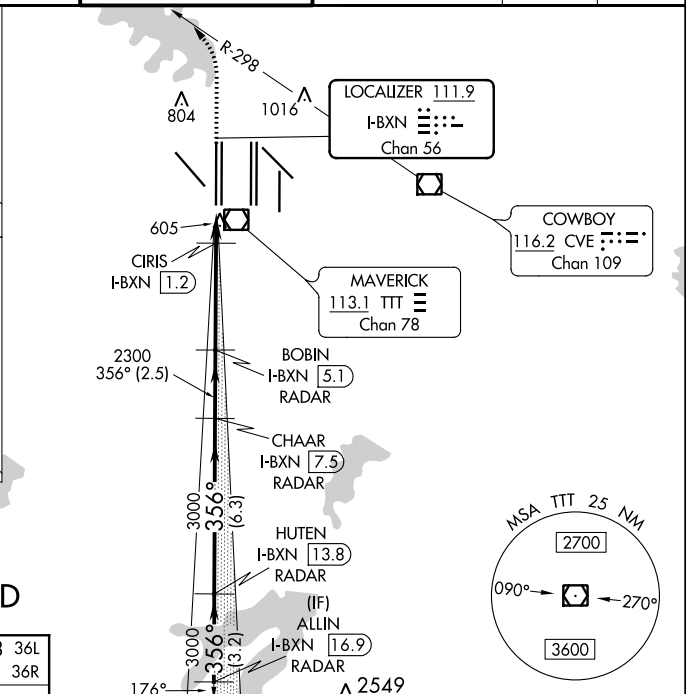
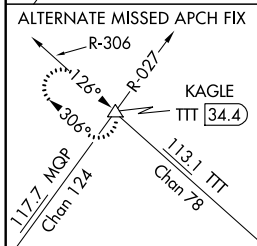
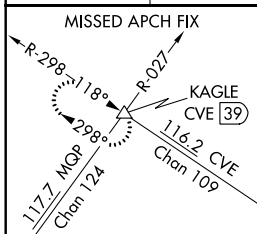
DALLAS-FORT WORTH INTL (DFW)

▼ Inop table does not apply to Sidestep 36R. Simultaneous approach authorized with Rwy 35L/C/R. DME or RADAR required. For inop ALS, increase S-LOC 36L Cat C and D visibility to 1/2 SM. For inop ALS, increase CIRIS fix minimums Cat C and D visibility to RVR 4500.

Rwys 36L/R  
MALSR  


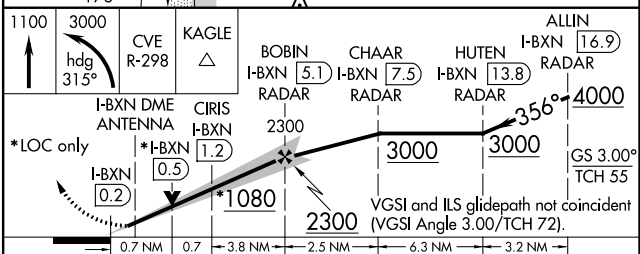
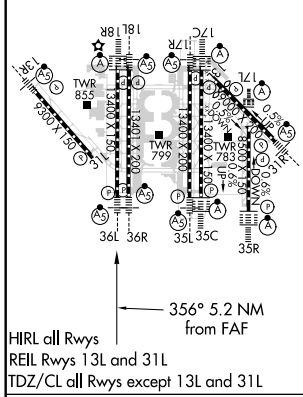
MISSED APPROACH: Climb to 1100 then climbing left turn to 3000 on heading 315° and CVE VOR/DME R-298 to KAGLE INT/ CVE VOR/DME 39 DME and hold.

D-ATIS ARR <b>123.775</b> DEP <b>135.925</b>	REGIONAL APP CON <b>118.425</b>	DFW TOWER <b>126.55 127.5 EAST</b> <b>124.15 134.9 WEST</b>	GND CON <b>121.65 121.8 EAST</b> <b>121.85 WEST</b>	CLNC DEL <b>128.25</b>	CPDLC
--	------------------------------------	---	---	---------------------------	-------



## RADAR REQUIRED

ELEV 607	<b>D</b>	TDZE 588 36L TDZE 581 36R
----------	----------	------------------------------



CATEGORY	A	B	C	D
S-ILS 36L	788/18 200 (200-1/2)			
S-LOC 36L	1080/24	492 (500-1/2)	1080/50	492 (500-1)
SIDESTEP 36R	1080/50	499 (500-1)	1080-1 1/2	499 (500-1 1/2)
CIRIS FIX MINIMUMS (DME required)				
S-LOC 36L	880/24 292 (300-1/2)			

SC-2, 10 SEP 2020 to 08 OCT 2020

SC-2, 10 SEP 2020 to 08 OCT 2020