

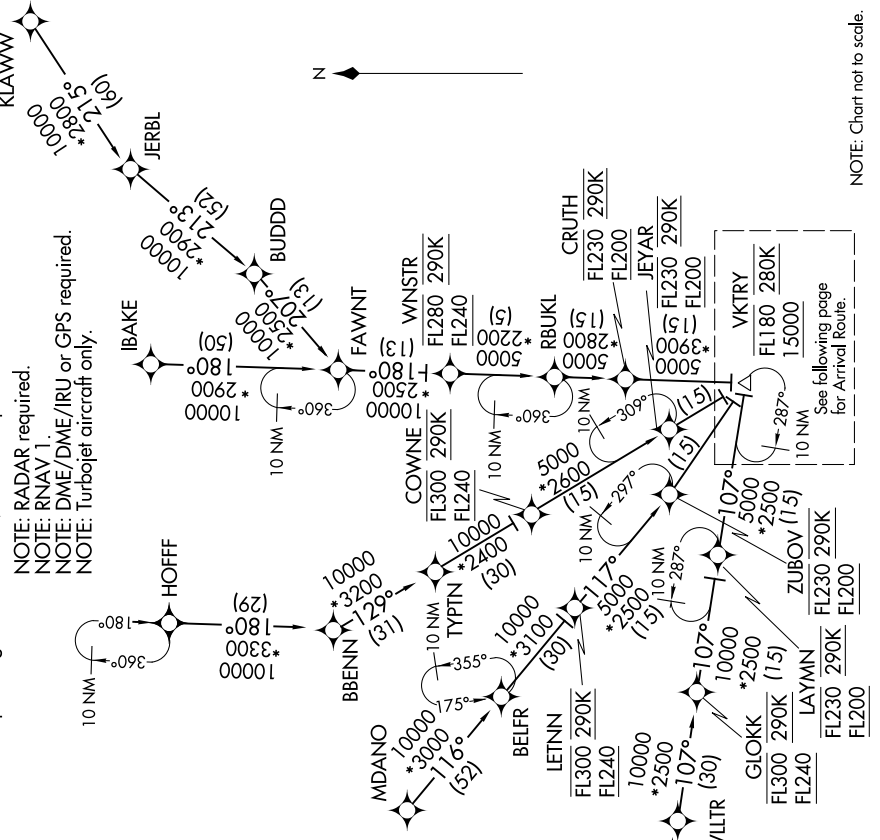
JOVEM FOUR ARRIVAL (RNAV) Transition Routes

SC-2, 10 SEP 2020 to 08 OCT 2020

NOTE: For use when DFW is operating in a north flow. When DFW is operating in a south flow, file and expect the VKTRY RNAV STAR.

- NOTE: RADAR required.
- NOTE: RNAV 1.
- NOTE: DME/DME/IRU or GPS required.
- NOTE: Turbojet aircraft only.

| |
|---|
| D-ATIS ARR 123.775 REGIONAL APP CON 119.875 284.65 |
| <u>BELFR TRANSITION (BELFR.JOVEM4):</u> (ATC assigned only.) |
| <u>FAWNT TRANSITION (FAWNT.JOVEM4):</u> (ATC assigned only.) |
| <u>HNKER TRANSITION (HINKER.JOVEM4):</u> (ATC assigned only.) |
| <u>HOFF TRANSITION (HOFF.JOVEM4):</u> (ATC assigned only.) |
| <u>IBAKE TRANSITION (IBAKE.JOVEM4):</u> (ATC assigned only.) |
| <u>KLAWW TRANSITION (KLAWW.JOVEM4):</u> (ATC assigned only.) |
| <u>MDANO TRANSITION (MDANO.JOVEM4):</u> (ATC assigned only.) |
| <u>RBUKL TRANSITION (RBUKL.JOVEM4):</u> (For OKC Terminal Area Departures only.) |
| <u>TURKI TRANSITION (TURKI.JOVEM4):</u> (ATC assigned only.) |
| <u>TYPTN TRANSITION (TYPTN.JOVEM4):</u> (ATC assigned only.) |
| <u>WILTR TRANSITION (WILTR.JOVEM4):</u> (ATC assigned only.) |



NOTE: Chart not to scale.

SC-2, 10 SEP 2020 to 08 OCT 2020

JOVEM FOUR ARRIVAL (RNAV) Transition Routes

(CONTINUED ON FOLLOWING PAGE)
(NARRATIVE ON FOLLOWING PAGE)