

KUSSO SIX DEPARTURE (RNAV)

DALLAS-FORT WORTH, TEXAS

SC-2, 10 SEP 2020 to 08 OCT 2020

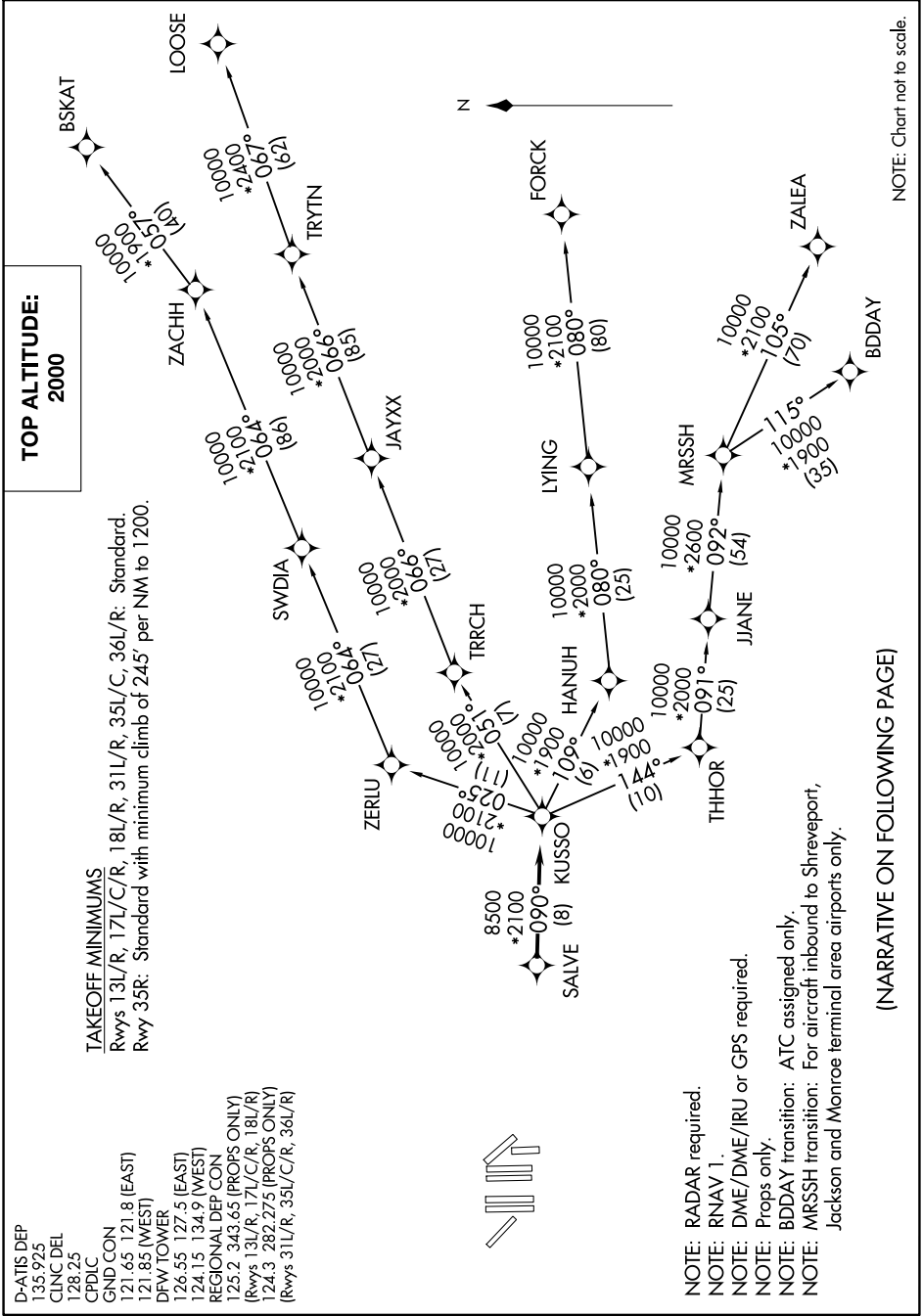
D-ATIS DEP
135.925
CLNC DEL
128.25
CPDLC

TAKEOFF MINIMUMS

Rwys 13L/R, 17L/C/R, 18L/R, 31L/R, 35L/C, 36L/R: Standard.
Rwy 35R: Standard with minimum climb of 245' per NM to 1200.

GND CON
121.65 121.8 (EAST)
121.85 (WEST)
DFW TOWER
126.55 127.5 (EAST)
124.15 134.9 (WEST)
REGIONAL DEP CON
125.2 343.65 (PROPS ONLY)
124.3 282.275 (PROPS ONLY)
(Rwys 13L/R, 17L/C/R, 18L/R)
(Rwys 31L/R, 35L/C/R, 36L/R)

**TOP ALTITUDE:
2000**



NOTE: Chart not to scale.

SC-2, 10 SEP 2020 to 08 OCT 2020

(NARRATIVE ON FOLLOWING PAGE)