

WAAS CH <b>97324</b> <b>W17D</b>	APP CRS <b>176°</b>	Rwy Idg <b>13400</b> TDZE <b>562</b> Apt Elev <b>607</b>
--	------------------------	--

# RNAV (GPS) RWY 17C

DALLAS-FORT WORTH INTL (DFW)

**▽** For uncompensated Baro-VNAV systems, LNAV/VNAV NA below -4°C (25°F) or above 54°C (130°F). Simultaneous approach authorized with Rwy 17L and 18L/R. DME/DME RNP-0.3 NA. LNAV procedure NA during simultaneous operations. Use of FD or AP providing RNAV track guidance required during simultaneous operations.

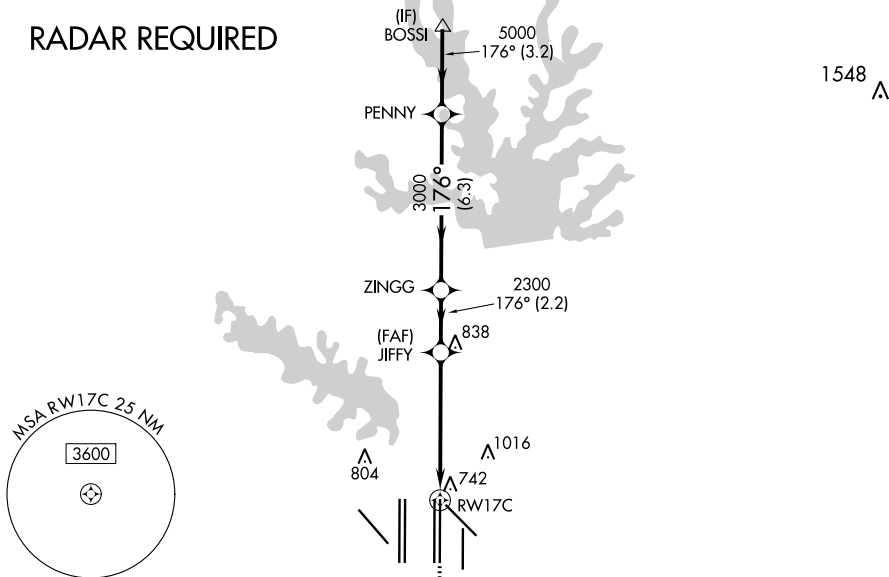
ALSF-2



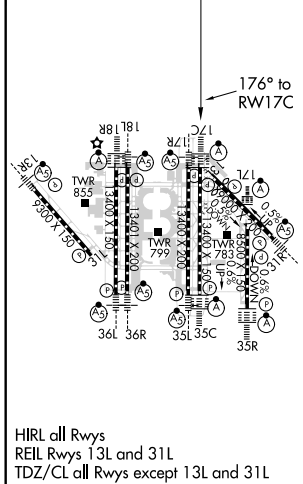
MISSED APPROACH: Climb to at or below 3000 direct YUPRU then climb to 4000 on track 176° to RAYMA and hold.

ATIS ARR <b>123.775</b> DEP <b>135.925</b>	REGIONAL APP CON <b>127.075</b>	DFW TOWER <b>126.55 127.5 EAST</b> <b>124.15 134.9 WEST</b>	GND CON <b>121.65 121.8 EAST</b> <b>121.85 WEST</b>	CLNC DEL <b>128.25</b>	CPDLC
--	------------------------------------	---	---	---------------------------	-------

## RADAR REQUIRED



ELEV 607	<b>D</b>	TDZE 562
----------	----------	----------



3000	YUPRU	4000	RAYMA	VGSi and RNAV glidepath not coincident (VGSi Angle 3.00/TCH 74).	
↑	✦	↑	✦	BOSSI	
*LNAV only.		JIFFY	ZINGG	PENNY	BOSSI
RW17C	*1.1 NM to RW17C	2300	3000	5000	6000
-1.1 NM		-4.2 NM		-3.2 NM	
CATEGORY	A		B		D
LPV DA			762/18		200 (200-½)
LNAV/VNAV DA			1068/60		506 (500-¼)
LNAV MDA	1000/24		438 (400-½)		1000/40 438 (400-¾)

GP 3.00° TCH 58

SC-2, 10 SEP 2020 to 08 OCT 2020

SC-2, 10 SEP 2020 to 08 OCT 2020