

| | | |
|--|------------------------|--|
| WAAS CH 53505 W17A | APP CRS 176° | Rwy Idg 13400 TDZE 567 Apt Elev 607 |
|--|------------------------|--|

RNAV (GPS) RWY 17R

DALLAS-FORT WORTH INTL (DFW)

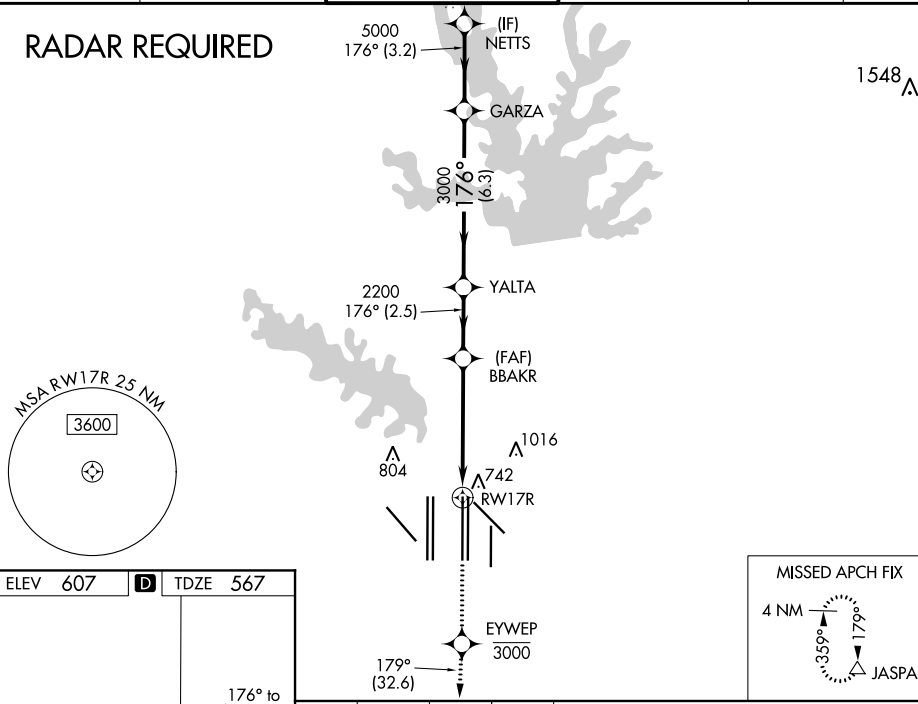
▼ For uncompensated Baro-VNAV systems, LNAV/VNAV NA below -4°C (25°F) or above 54°C (130°F). Simultaneous approach authorized with Rwy 17L and Rwys 18L/R. DME/DME RNP-0.3 NA. For inop MALSR increase LNAV/VNAV all Cats visibility to 1½ mile. LNAV procedure NA during simultaneous operations. Use of FD or AP providing RNAV track guidance required during simultaneous operations.



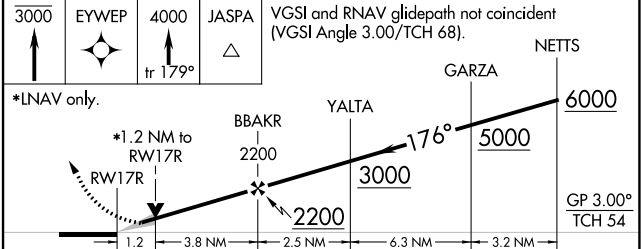
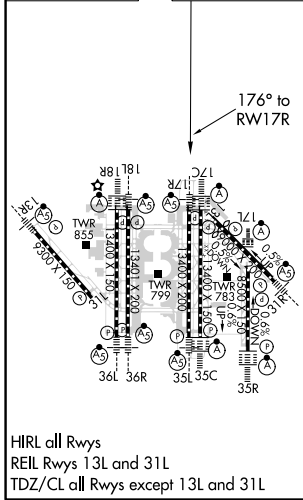
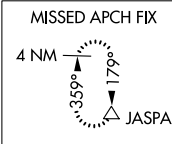
MISSED APPROACH: Climb to at or below 3000 direct EYWEP then climb to 4000 on track 179° to JASPA and hold.

| | | | | | |
|--|------------------------------------|---|---|---------------------------|-------|
| D-ATIS ARR 123.775 DEP 135.925 | REGIONAL APP CON 127.075 | DFW TOWER 126.55 127.5 EAST 124.15 134.9 WEST | GND CON 121.65 121.8 EAST 121.85 WEST | CLNC DEL 128.25 | CPDLC |
|--|------------------------------------|---|---|---------------------------|-------|

RADAR REQUIRED



| | | |
|-----------------|----------|-----------------|
| ELEV 607 | D | TDZE 567 |
|-----------------|----------|-----------------|



| CATEGORY | A | B | C | D |
|--------------|---------|-------------|--------------|-------------|
| LPV DA | | 767/18 | 200 (200-½) | |
| LNAV/VNAV DA | | 1066/60 | 499 (500-1¼) | |
| LNAV MDA | 1000/24 | 433 (400-½) | 1000/40 | 433 (400-¾) |

SC-2, 10 SEP 2020 to 08 OCT 2020

SC-2, 10 SEP 2020 to 08 OCT 2020