

WAAS CH 99407 W18B	APP CRS 176°	Rwy Idg 13400 TDZE 607 Apt Elev 607
--	------------------------	--

RNAV (GPS) RWY 18R

DALLAS-FORT WORTH INTL (DFW)

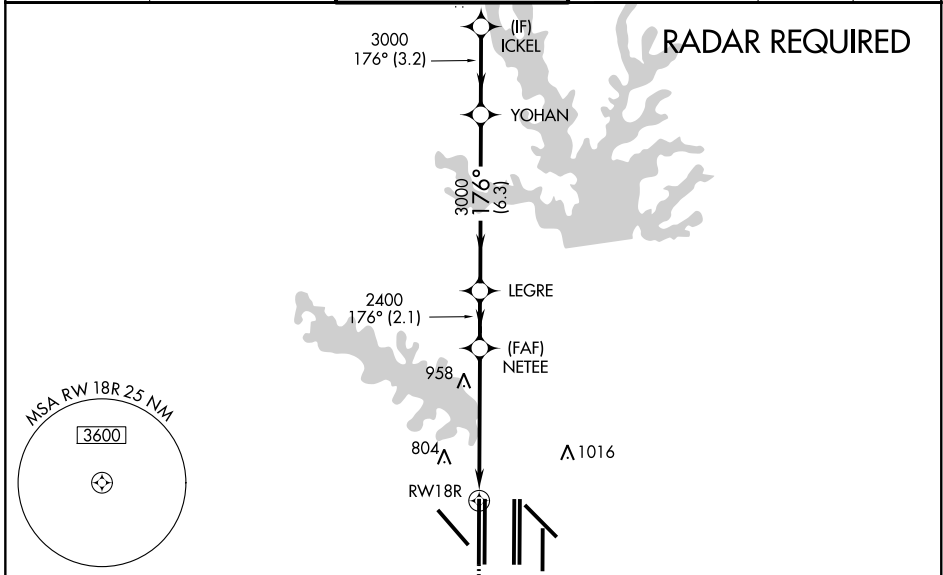
▽ For uncompensated Baro-VNAV systems, LNAV/VNAV NA below -4°C (25°F) or above 54°C (130°F). For inop ALSF, increase LNAV Cat C/D visibility to 1¼ mile. Simultaneous approach authorized with Rwy 17L/C/R. DME/DME RNP-0.3 NA. LNAV procedure NA during simultaneous operations. Use of FD or AP providing RNAV track guidance required during simultaneous operations.

ALSF-2

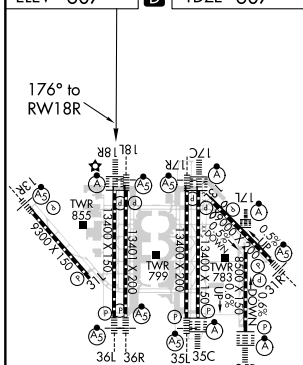


MISSED APPROACH: Climb to 1100 then climbing right turn to 3000 direct LIKES and hold.

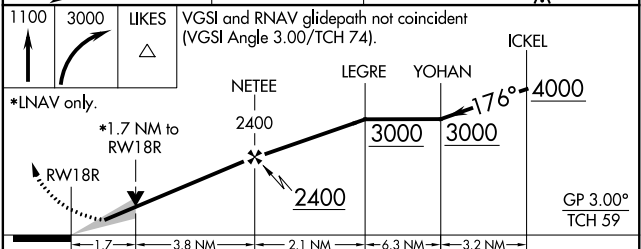
D-ATIS ARR 123.775 DEP 135.925	REGIONAL APP CON 118.425	DFW TOWER 126.55 127.5 EAST 124.15 134.9 WEST	GND CON 121.65 121.8 EAST 121.85 WEST	CLNC DEL 128.25	CPDLC
--	------------------------------------	---	---	---------------------------	-------



ELEV 607	D	TDZE 607
-----------------	----------	-----------------



HIRL all Rwys
REIL Rwys 13L and 31L
TDZ/CL all Rwys except 13L and 31L



CATEGORY	A	B	C	D
LPV DA		807/18	200 (200-½)	
LNAV/VNAV DA		980/40	373 (400-¾)	
LNAV MDA	1220/24	613 (700-½)	1220-1¾	613 (700-1¾)

SC-2, 10 SEP 2020 to 08 OCT 2020

SC-2, 10 SEP 2020 to 08 OCT 2020