

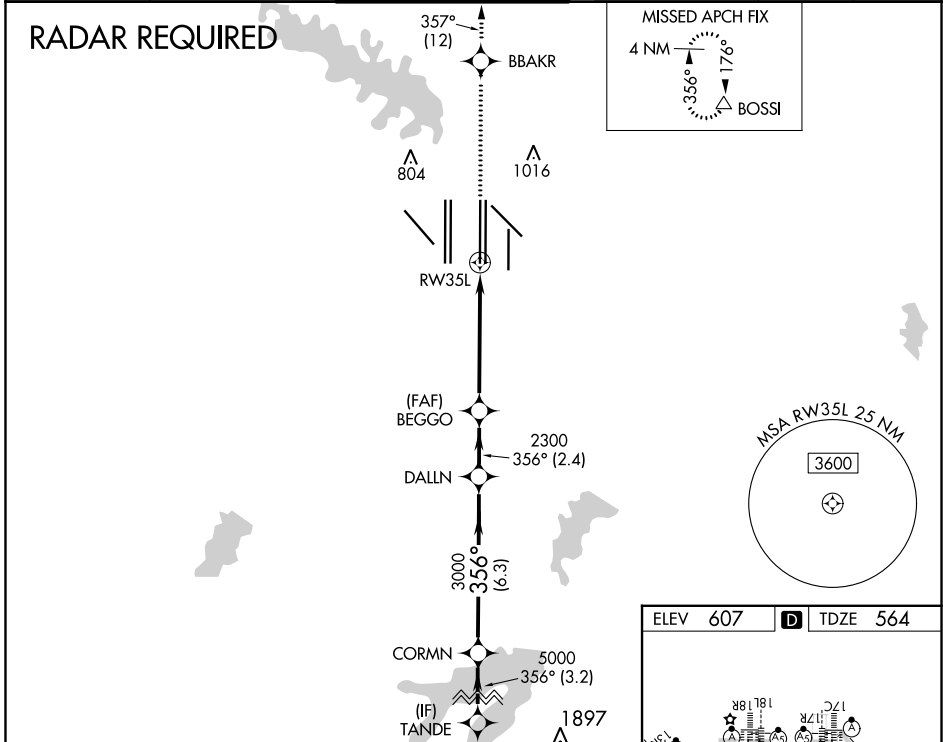
WAAS CH <b>45805</b> <b>W35B</b>	APP CRS <b>356°</b>	Rwy Idg <b>13400</b> TDZE <b>564</b> Apt Elev <b>607</b>
--	------------------------	--

# RNAV (GPS) RWY 35L

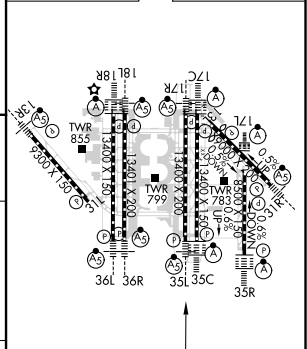
DALLAS-FORT WORTH INTL (DFW)

<p><b>▽</b> For uncompensated Baro-VNAV systems, LNAV/VNAV NA below -4°C (25°F) or above 54°C (130°F). Simultaneous approach authorized with Rwy 36L/R and Rwy 35R. DME/DME RNP-0.3 NA. LNAV procedure NA during simultaneous operations. Use of FD or AP providing RNAV track guidance required during simultaneous operations.</p>		<p>MALSRL </p>	<p><b>MISSED APPROACH:</b> Climb to 3000 direct BBAKR and on track 357° to BOSSI and hold.</p>		
D-ATIS ARR <b>123.775</b> DEP <b>135.925</b>	REGIONAL APP CON <b>127.075</b>	DFW TOWER <b>126.55 127.5</b> EAST <b>124.15 134.9</b> WEST	GND CON <b>121.65 121.8</b> EAST <b>121.85</b> WEST	CLNC DEL <b>128.25</b>	CPDLC

## RADAR REQUIRED



ELEV <b>607</b>	<b>D</b> TDZE <b>564</b>
-----------------	--------------------------



VGSI and RNAV glidepath not coincident (VGSI Angle 3.00/TCH 63).

TANDE	CORMN	DALLN	BEGGO	tr 357°	BOSSI
6000	5000	3000	2300		
GP 3.00°					
TCH 47					
	3.2 NM	6.3 NM	2.4 NM	4.1 NM	1.2
CATEGORY	A	B	C	D	
LPV DA		764/18	200 (200-1/2)		
LNAV/VNAV DA		928/40	364 (400-3/4)		
LNAV MDA	1020/24	456 (500-1/2)	1020/45	456 (500-7/8)	

\*LNAV only.  
\*1.2 NM to RWY 35L

HIRL all Rwys  
REIL Rws 13L and 31L  
TDZ/CL all Rws except 13L, and 31L

SC-2, 10 SEP 2020 to 08 OCT 2020

SC-2, 10 SEP 2020 to 08 OCT 2020