

WAAS CH <b>40401</b> <b>W35A</b>	APP CRS <b>356°</b>	Rwy Idg <b>8500</b> TDZE <b>575</b> Apt Elev <b>607</b>
--	------------------------	---

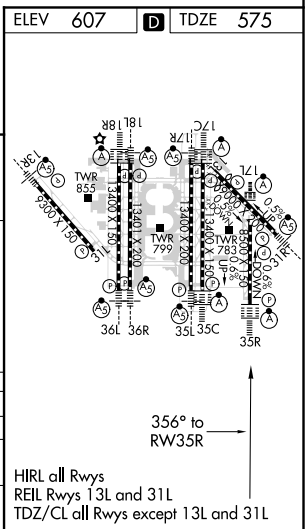
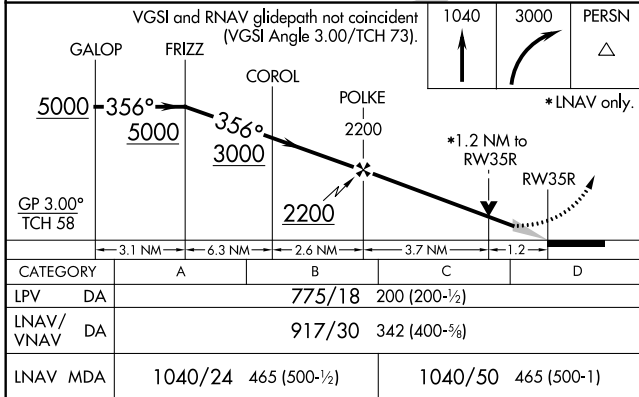
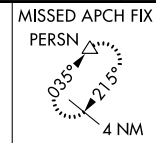
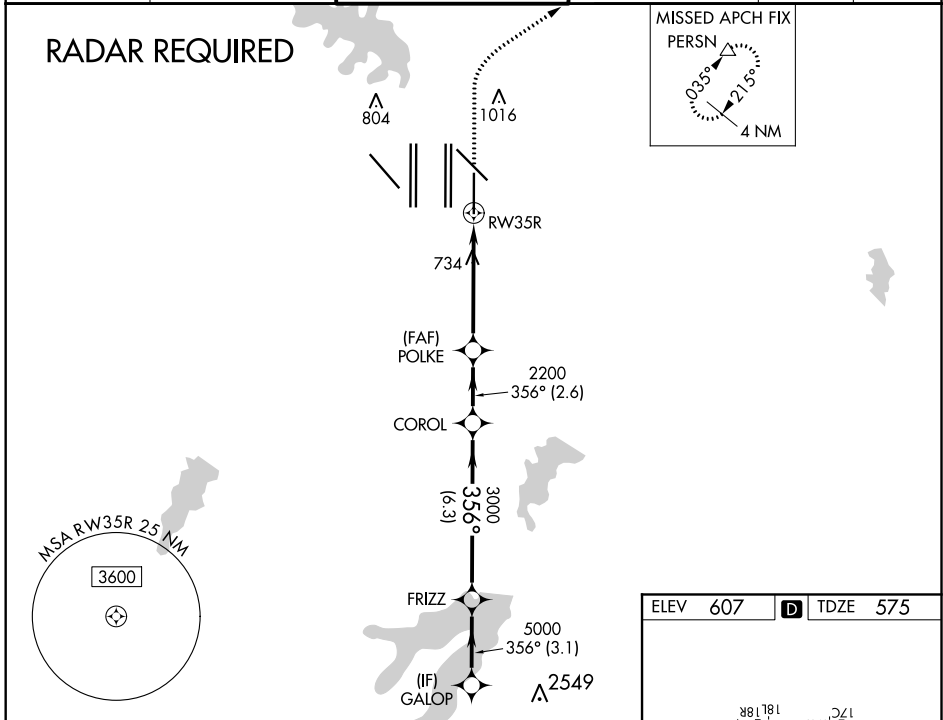
# RNAV (GPS) RWY 35R

DALLAS-FORT WORTH INTL (DFW)

**▼** For uncompensated Baro-VNAV systems, LNAV/VNAV NA below -4°C (25°F) or above 54°C (130°F). For inop ALSF, increase LNAV/VNAV all Cats visibility to RVR 6000, increase LNAV Cat C/D visibility to 1 $\frac{3}{8}$  mile. Simultaneous approach authorized with Rwy 35 L/C and 36L/R. DME/DME RNP-0.3 NA. LNAV procedure NA during simultaneous operations. Use of FD or AP providing RNAV track guidance required during simultaneous operations.

**ALSF-2**  
 MISSED APPROACH: Climb to 1040 then climbing right turn to 3000 direct PERSN and hold.

D-ATIS ARR <b>123.775</b> DEP <b>135.925</b>	REGIONAL APP CON <b>119.4</b>	DFW TOWER <b>126.55 127.5 EAST</b> <b>124.15 134.9 WEST</b>	GND CON <b>121.65 121.8 EAST</b> <b>121.85 WEST</b>	CLNC DEL <b>128.25</b>	CPDLC
--	----------------------------------	---	---	---------------------------	-------



SC-2, 10 SEP 2020 to 08 OCT 2020

SC-2, 10 SEP 2020 to 08 OCT 2020