


# RNAV (RNP) Z RWY 13R

DALLAS-FORT WORTH INTL (DFW)

APP CRS	Rwy Idg	<b>9300</b>
<b>135°</b>	TDZE	<b>591</b>
	Apt Elev	<b>606</b>

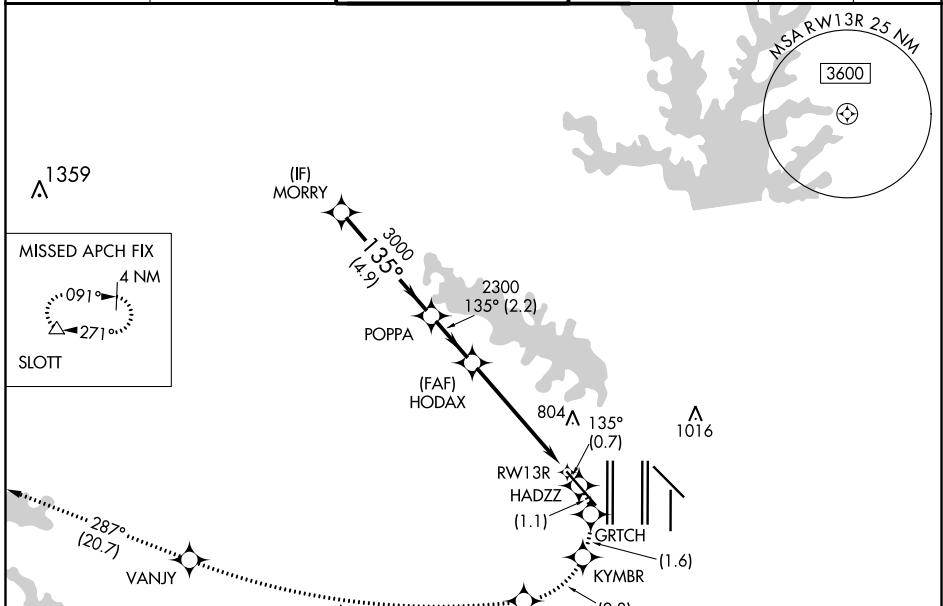
RNP AR APCH. RF required.

**▼** For uncompensated Baro-VNAV systems, procedure NA below -6°C or above 54°C. Missed approach requires RNP less than 1.0.

MALSR 

MISSED APPROACH: (Do not exceed 185K until HRNTT) Climb to 3000 on the RNAV missed approach route to SLOTT and hold.

D-ATIS	REGIONAL APP CON	DFW TOWER	GND CON	CLNC DEL	CPDLC
ARR <b>123.775</b>	<b>133.15 118.1</b>	<b>126.55 127.5 EAST</b>	<b>121.65 121.8 EAST</b>	<b>128.25</b>	
DEP <b>135.925</b>		<b>124.15 134.9 WEST</b>	<b>121.85 WEST</b>		



ELEV 606	TDZE 591
----------	----------

3000	HADZZ	GRTCH	KYMBR	HRNTT	VANJY	SLOTT
↑	↘	↘	↘	↘	↘	△
tr 135°					tr 287°	

VGSI and RNAV glidepath not coincident (VGSI Angle 3.00/TCH 71).

Diagram showing the difference between the VGSI glidepath (3.00°) and the RNAV glidepath (3.00°) for RWY 13R. The VGSI glidepath is 3.00° (TCH 55) and the RNAV glidepath is 3.00° (TCH 71). Distances are 4.9 NM (MORRY-POPPA), 2.2 NM (POPPA-HODAX), and 5.2 NM (HODAX-RWY13R).

CATEGORY	A	B	C	D
RNP 0.30 DA		1041/45	450 (500-7%)	

135° to RWY13R

HIRL all Rwys  
REIL Rwy 13L and 31L  
TDZ/CL all Rwys except 13L and 31L

SC-2, 10 SEP 2020 to 08 OCT 2020

SC-2, 10 SEP 2020 to 08 OCT 2020