

| | | |
|--|------------------------|---|
| WAAS CH 77818 W07A | APP CRS 065° | Rwy Idg 5003 TDZE 147 Apt Elev 147 |
|--|------------------------|---|

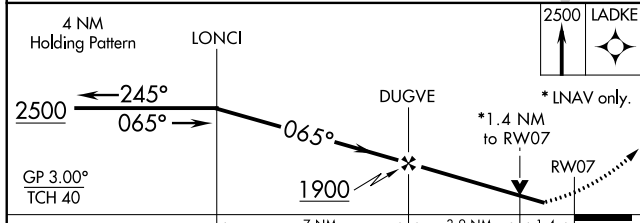
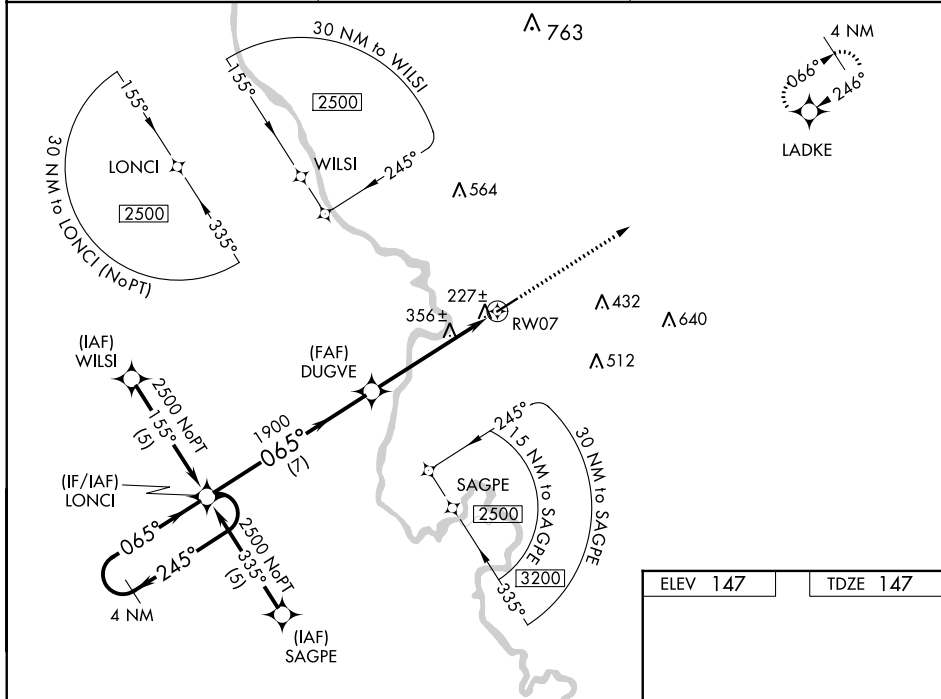
RNAV (GPS) RWY 7
MARLBORO COUNTY JETPORT-H E AVENT FIELD (BBP)

RNP APCH.

▼ Baro-VNAV NA when using Florence altimeter setting. For uncompensated Baro-VNAV systems, LNAV/VNAV NA below -15°C or above 48°C. Rwy 7 helicopter visibility reduction below ¾ SM NA. When local altimeter setting not received, use Florence altimeter setting and increase all DA 61 feet and MDA 80 feet; increase LPV all Cats, LNAV/VNAV all Cats, and LNAV Cats C and Cat D visibility ¼ mile. VDP NA with Florence altimeter setting.

MISSED APPROACH: Climb to 2500 direct LADKE and hold.

| | | |
|----------------------------|--|-------------------------------|
| AWOS-3PT 123.825 | FLORENCE APP CON ★ 118.6 341.7 | UNICOM 122.8 (CTAF) |
|----------------------------|--|-------------------------------|



| | |
|----------|----------|
| ELEV 147 | TDZE 147 |
|----------|----------|

| CATEGORY | A | B | C | D |
|--------------|---------------------|---------------------|---------------------|------------------------------------|
| LPV DA | 437-1 290 (300-1) | | | |
| LNAV/VNAV DA | 507-1¼ 360 (400-1¼) | | | |
| LNAV MDA | 620-1 473 (500-1) | 620-1¼ 473 (500-1¼) | 620-1½ 473 (500-1½) | MIRL Rwy 7-25 REIL Rws 7 and 25 |

SE-2, 10 SEP 2020 to 08 OCT 2020

SE-2, 10 SEP 2020 to 08 OCT 2020