

VORTAC ODF 113.4 Chan 81	APP CRS 048°	Rwy Idg TDZE 1446 Apt Elev 1448	4111
--	------------------------	---	-------------

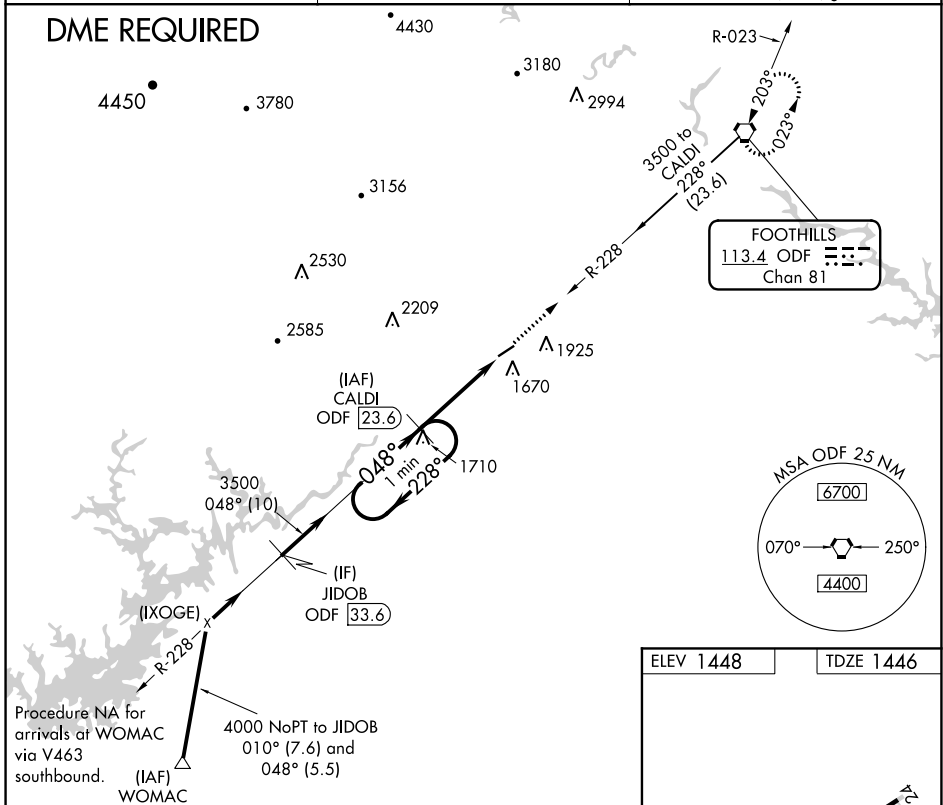
VOR RWY 6
HABERSHAM COUNTY (AJR)

▼ When local altimeter setting not received, use Gainesville altimeter setting and increase all MDA 80 feet and increase S-6 Cats C/D and Circling Cats C/D visibility ¼ mile.
 ▲ NA Circling Rwy 24 NA at night. Rwy 6 helicopter visibility reduction below ¾ SM NA. Rwy 24 helicopter visibility reduction below 1 SM NA. DME required.

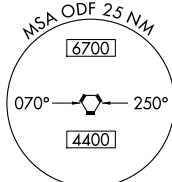
MISSED APPROACH: Climb to 5000 via ODF R-228 to ODF VORTAC and hold.

AWOS-3 119.175	ATLANTA CENTER 134.8 379.95	UNICOM 122.7 (CTAF) 0
--------------------------	---------------------------------------	---------------------------------

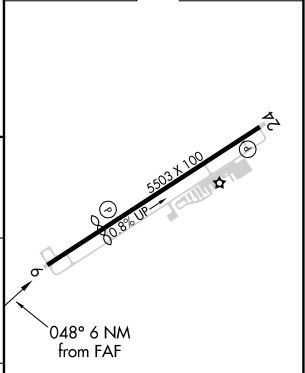
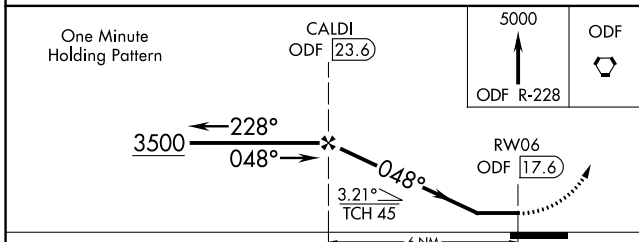
DME REQUIRED



FOOTHILLS
113.4 ODF
Chan 81



ELEV 1448	TDZE 1446
-----------	-----------



CATEGORY	A	B	C	D
S-6	1980-1	534 (600-1)	1980-1½ 534 (600-1½)	1980-1¾ 534 (600-1¾)
CIRCLING	2100-1	652 (700-1)	2100-1¾ 652 (700-1¾)	2280-2¾ 832 (900-2¾)

MIRL Rwy 6-24 0

SE-4, 10 SEP 2020 to 08 OCT 2020

SE-4, 10 SEP 2020 to 08 OCT 2020