

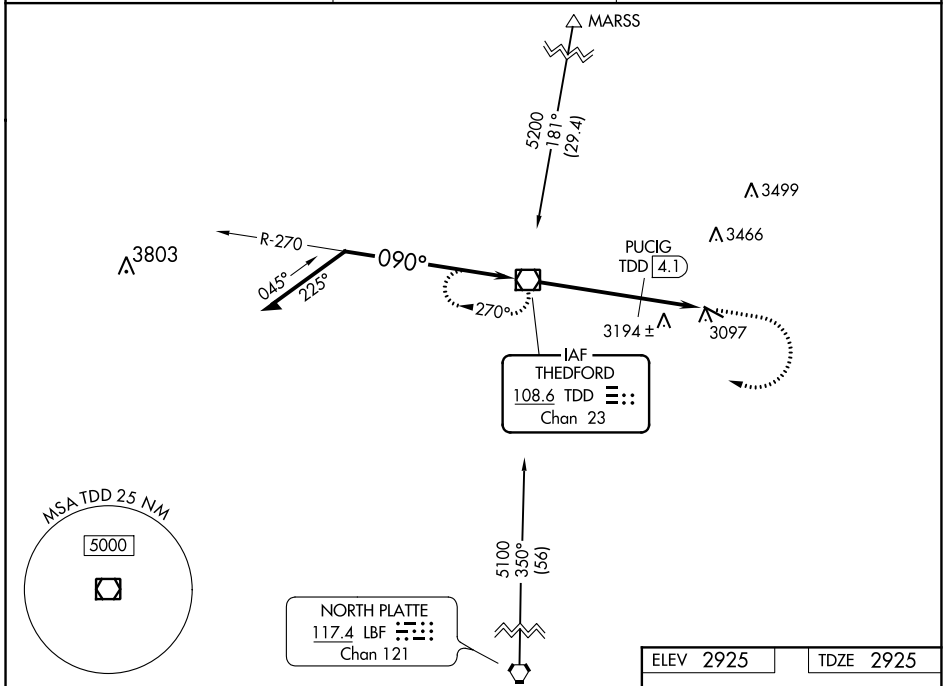
VOR/DME TDD <b>108.6</b> Chan <b>23</b>	APP CRS <b>090°</b>	Rwy Idg TDZE Apt Elev	<b>4400</b> <b>2925</b> <b>2925</b>
---	------------------------	-----------------------------	---

**VOR RWY 11**  
THOMAS COUNTY (TIF)

**NA** Visibility reduction by helicopters NA. When local altimeter setting not received, use North Platte altimeter setting and increase all MDA 140 feet, increase S-11 Cat B and Circling Cat B visibility 1/4 mile. VDP NA when using North Platte altimeter setting.

MISSED APPROACH: Climb to 4000 then climbing right turn to 5100 direct TDD VOR/DME and hold.

AWOS-3 <b>120.825</b>	DENVER CENTER <b>127.95 338.2</b>	CTAF <b>122.9</b>
--------------------------	--------------------------------------	----------------------



NC-2, 10 SEP 2020 to 08 OCT 2020

NC-2, 10 SEP 2020 to 08 OCT 2020

ELEV 2925		TDZE 2925	
<p>Remain within 10 NM</p> <p>5100 → 270° → VOR/DME</p> <p>5100 → 090° → *</p> <p>*3780 when using North Platte altimeter setting.</p>		<p>4000</p> <p>5100</p> <p>TDD</p> <p>PUCIG TDD 4.1</p> <p>TCH 40</p> <p>TDD 4.8</p> <p>TDD 6.4</p>	
<p>090° 6.4 NM from FAF</p> <p>4400 A 60</p> <p>0.3% UP</p>			
CATEGORY	A	B	D
S-11	3640-1	715 (800-1)	NA
CIRCLING	3640-1	715 (800-1)	NA
PUCIG FIX MINIMUMS			
S-11	3500-1	575 (600-1)	NA
CIRCLING	3500-1	575 (600-1)	NA
MIRL Rwy 11-29			
FAF to MAP 6.4 NM			
Knots	60	90	120 150 180
Min:Sec	6:30	4:20	3:15 2:36 2:10