

WAAS CH <b>81935</b> <b>W26A</b>	APP CRS <b>259°</b>	Rwy Idg TDZE Apt Elev	<b>4051</b> <b>696</b> <b>698</b>
--	------------------------	-----------------------------	---

# RNAV (GPS) RWY 26

LAURENS COUNTY (LUX)

RNP APCH:

▼ Rwy 26 helicopter visibility reduction below 3/4 SM NA.

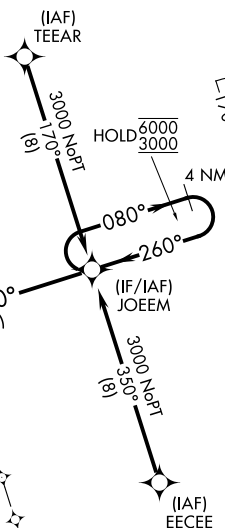
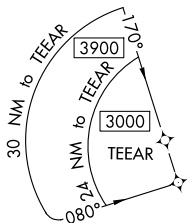
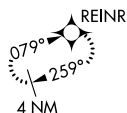
MISSED APPROACH: Climb to 3000 direct REINR and hold.

AWOS-3  
**123.975**

GREER APP CON ★  
**120.6 350.2**

UNICOM  
**122.8 (CTAF) 0**

MISSED APCH FIX



▲ 1988

▲ 1228

▲ 919

▲ 1073

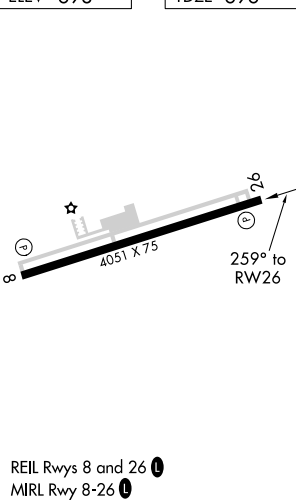
▲ 1068

SE-2, 10 SEP 2020 to 08 OCT 2020

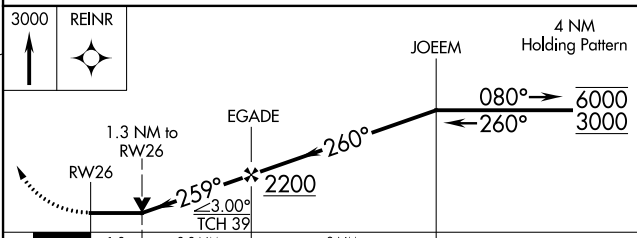
SE-2, 10 SEP 2020 to 08 OCT 2020

ELEV 698

TDZE 696



REIL Rws 8 and 26 0  
MIRL Rwy 8-26 0



CATEGORY	A	B	C	D
LP MDA	1160-1	464 (500-1)		NA
LNAV MDA	1160-1	464 (500-1)		NA
<input checked="" type="checkbox"/> CIRCLING	1200-1	502 (600-1)		NA