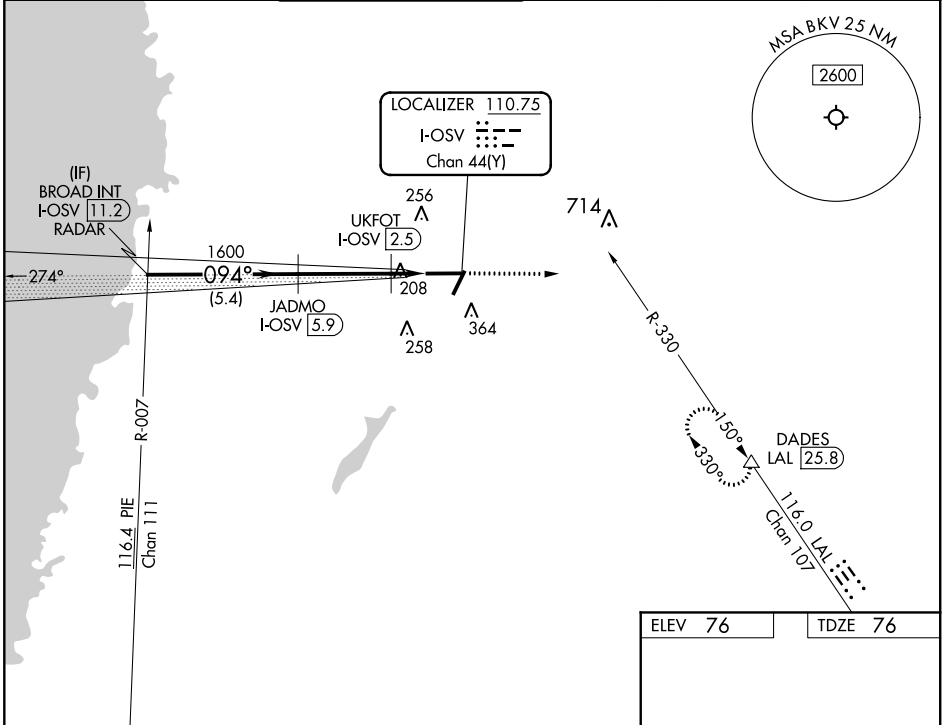


LOC/DME I-OSV <b>110.75</b> Chan 44(Y)	APP CRS <b>094°</b>	Rwy Idg <b>7001</b> TDZE <b>76</b> Apt Elev <b>76</b>
--	------------------------	---

# ILS or LOC RWY 9

BROOKSVILLE-TAMPA BAY RGNL (BKV)

RADAR required for procedure entry. DME required.			MALSR 	MISSED APPROACH: Climb to 3000 on heading 090° and LAL VORTAC R-330 to DADES/LAL VORTAC 25.8 DME and hold.	
NA			ASOS <b>134.725</b>	TAMPA APP CON <b>125.3 316.05</b>	BROOKSVILLE TOWER ★ <b>118.55 (CTAF) 0</b>
			GND CON <b>121.4</b>	CLNC DEL <b>119.125</b>	UNICOM <b>123.0</b>



SE-3, 10 SEP 2020 to 08 OCT 2020

SE-3, 10 SEP 2020 to 08 OCT 2020

BROAD INT I-OSV 11.2 RADAR		3000 hdg 090°		LAL R-330	DADES △	094° 4.6 NM from FAF
2000		1600		UKFOT I-OSV 2.5	I-OSV 1.2	
GS 3.00° TCH 57		*520		*LOC only.		
5.4 NM		3.3 NM		1.3 NM		
CATEGORY	A	B	C	D		
S-ILS 9	276-1/2		200 (200-1/2)			
S-LOC 9	460-1/2 384 (400-1/2)		460-5/8 384 (400-5/8)			
CIRCLING	680-1 604 (700-1)		680-1 3/4 604 (700-1 3/4)		760-2 1/4 684 (700-2 1/4)	
MIRL Rwy 3-21 and 9-27 0						