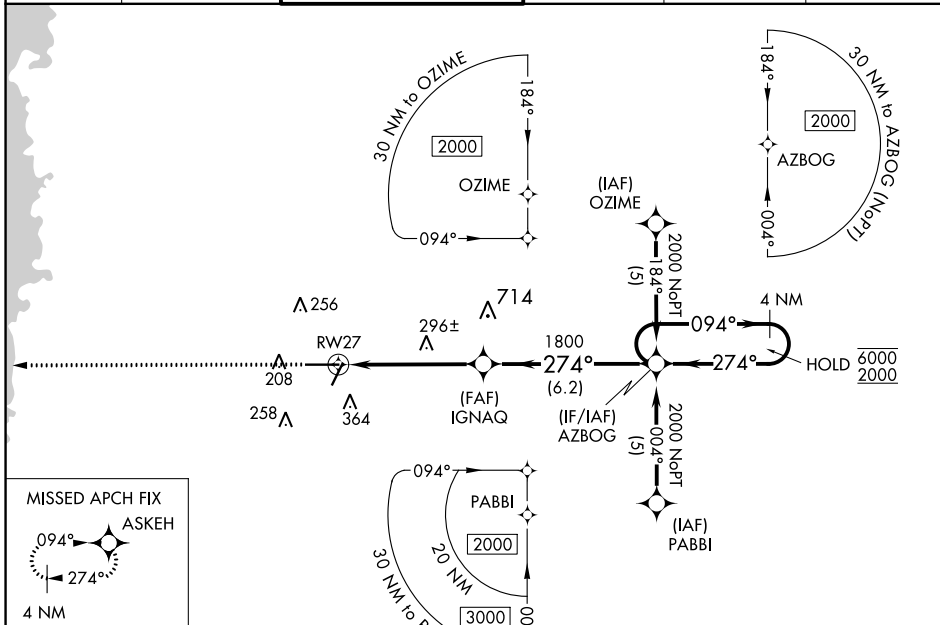


WAAS CH 86408 W27A	APP CRS 274°	Rwy Idg TDZE Apt Elev	7001 69 76
--	------------------------	-----------------------------	---------------------------------------

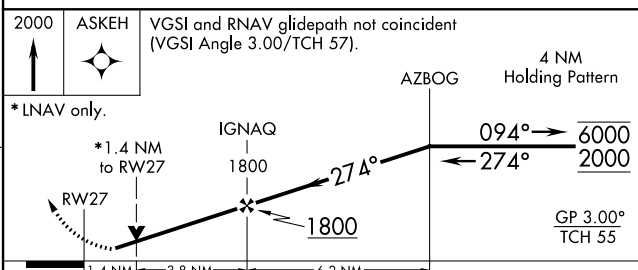
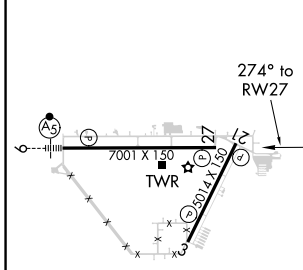
RNAV (GPS) RWY 27

BROOKSVILLE-TAMPA BAY RGNL (BKV)

RNP APCH.		MISSED APPROACH: Climb to 2000 direct ASKEH and hold.			
<p>▽ Rwy 27 helicopter visibility reduction below 3/4 SM NA. For uncompensated Baro-VNAV systems, LNAV/VNAV NA below -15°C or above 48°C.</p>					
ASOS 134.725	TAMPA APP CON 125.3 316.05	BROOKSVILLE TOWER ★ 118.55 (CTAF) 0	GND CON 121.4	CLNC DEL 119.125	UNICOM 123.0



ELEV 76	TDZE 69
---------	---------



2000 ASKEH	VGSi and RNAV glidepath not coincident (VGSi Angle 3.00/TCH 57).			
* LNAV only.	<p>IGNAQ 1800</p> <p>RWY 27 1.4 NM to 3.8 NM to 6.2 NM</p> <p>AZBOG 4 NM Holding Pattern</p> <p>GP 3.00° TCH 55</p>			
CATEGORY	A	B	C	D
LPV DA		442-1¼	373 (400-1¼)	
LNAV/VNAV DA		595-1¾	526 (600-1¾)	
LNAV MDA	620-1	551 (600-1)	620-1½ 551 (600-1½)	620-1¾ 551 (600-1¾)

SE-3, 10 SEP 2020 to 08 OCT 2020

SE-3, 10 SEP 2020 to 08 OCT 2020