

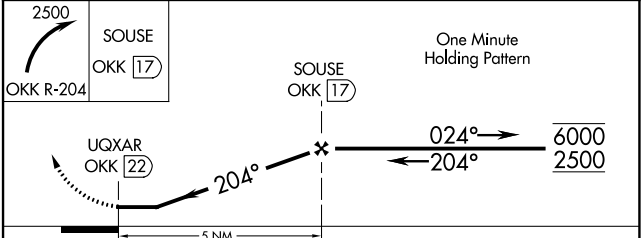
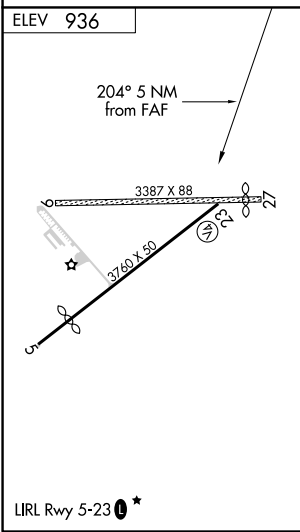
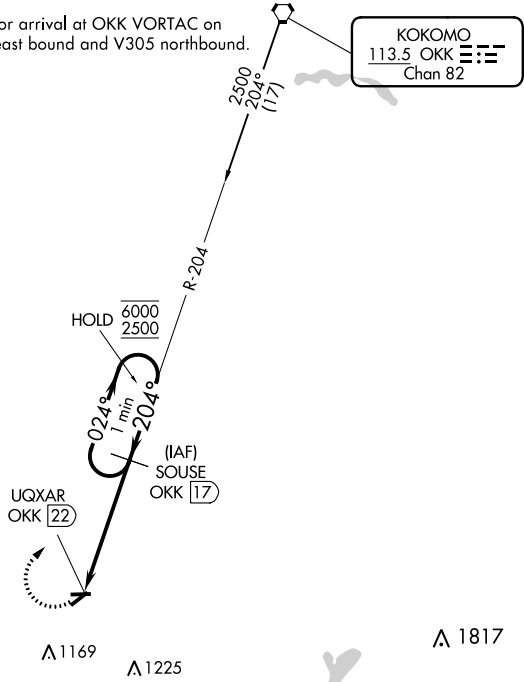
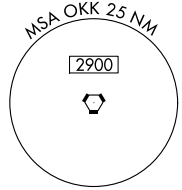
VORTAC OKK 113.5 Chan 82	APP CRS 204°	Rwy Idg TDZE Apt Elev	N/A N/A 936
----------------------------------------------	------------------------	-----------------------------	----------------------------------------

VOR-A
SHERIDAN (5I4)

DME required.		MISSED APPROACH: Climbing right turn to 2500 on OKK VORTAC R-204 to SOUSE/17 DME and hold.
NA Circling NA to Rwys 9 and 27. Procedure NA at night. Use Indianapolis Executive altimeter setting.	TYQ AWOS-3PT 120.725	INDIANAPOLIS APP CON 124.65 317.8
UNICOM 123.075 (CTAF) 0		

Procedure NA for arrival at OKK VORTAC on V96-285 northeast bound and V305 northbound.

KOKOMO
113.5 OKK Chan 82



CATEGORY	A	B	C	D
CIRCLING	1460-1 524 (600-1)	1480-1 544 (600-1)	1500-1½ 564 (600-1½)	NA

EC-2, 10 SEP 2020 to 08 OCT 2020

EC-2, 10 SEP 2020 to 08 OCT 2020