

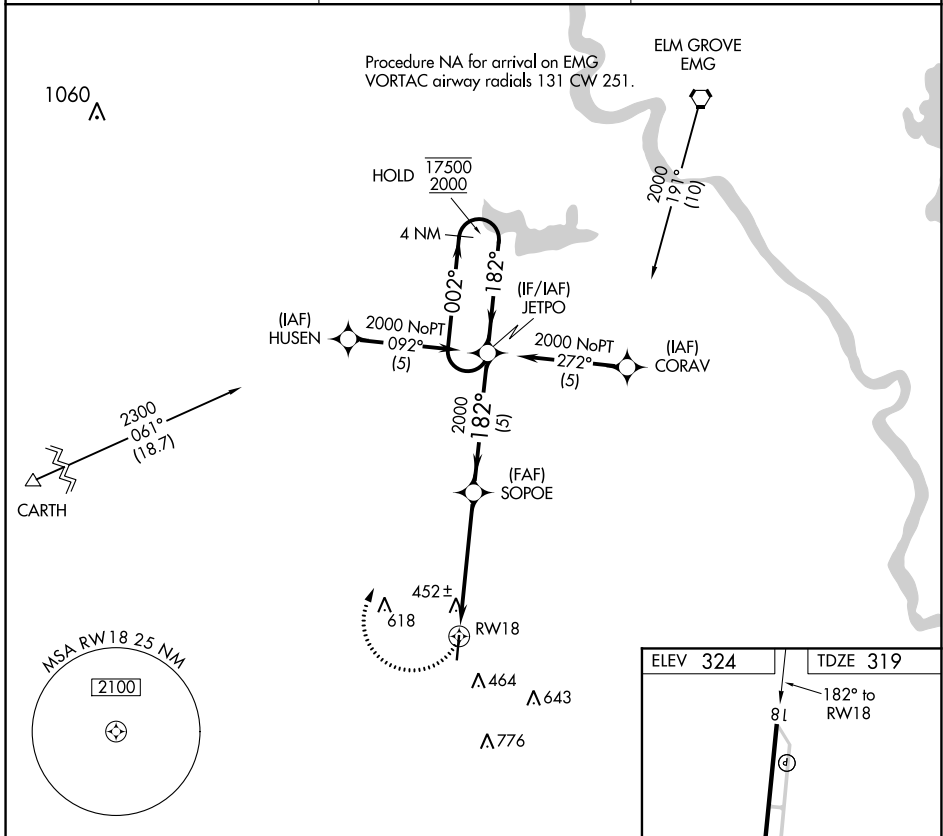
APP CRS 182°	Rwy Idg TDZE Apt Elev	5005 319 324
------------------------	-----------------------------	---

RNAV (GPS) RWY 18

C E 'RUSTY' WILLIAMS (3F'3)

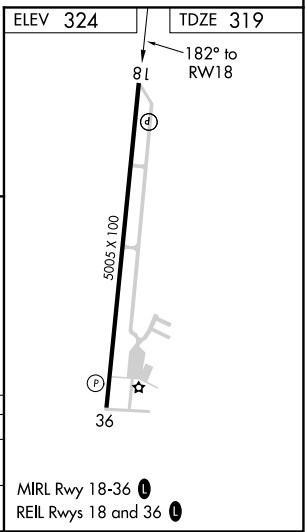
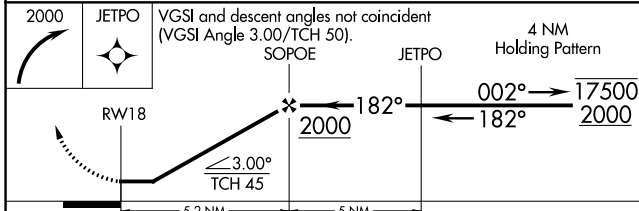
RNP APCH	<p>Procedure NA at night. Rwy 18 helicopter visibility reduction below 1 SM NA. When local altimeter not received, use Shreveport Rgnl altimeter setting.</p>	<p>MISSED APPROACH: Climbing right turn to 2000 direct JETPO and hold.</p>
----------	---	--

AWOS-3PT 119.125	SHREVEPORT APP CON * 119.9 335.55	UNICOM 122.8 (CTAF) 0
----------------------------	---	---------------------------------



SC-4, 10 SEP 2020 to 08 OCT 2020

SC-4, 10 SEP 2020 to 08 OCT 2020



CATEGORY	A	B	C	D
RNAV MDA	780-1	461 (500-1)	780-1¼ 461 (500-1¼)	NA
CIRCLING	880-1	556 (600-1)	880-1½ 556 (600-1½)	NA