

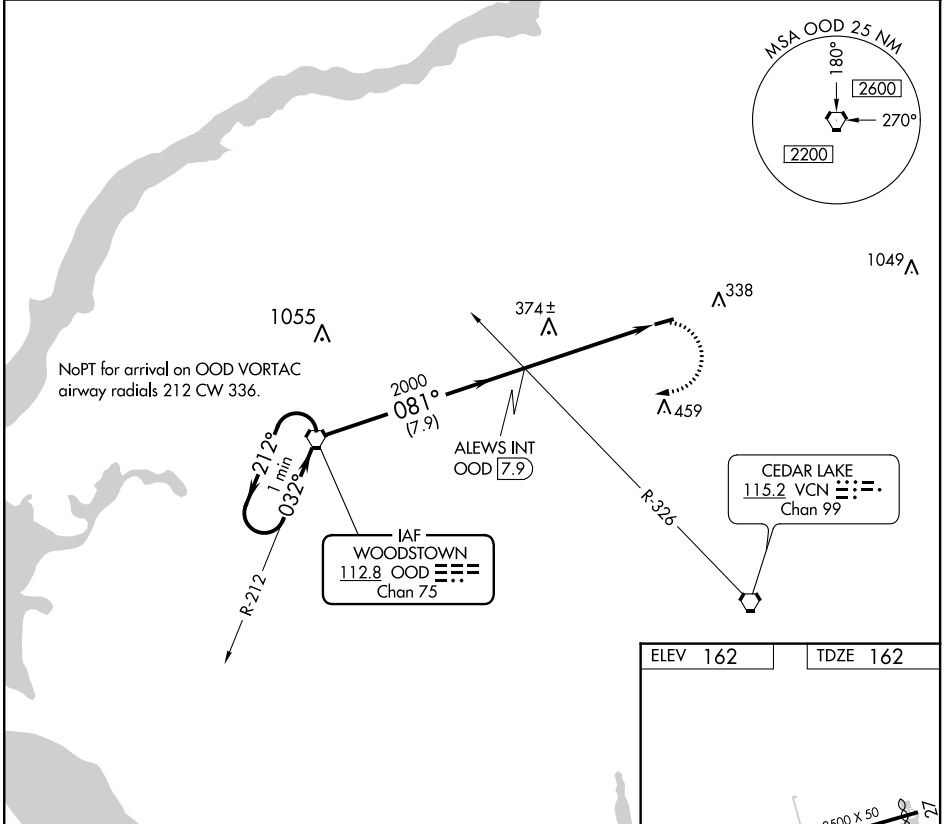
VORTAC OOD 112.8 Chan 75	APP CRS 081°	Rwy Idg 3500 TDZE 162 Apt Elev 162
--	------------------------	---

VOR or GPS RWY 9

CROSS KEYS (17N)

<p>▼ Rwy 9 helicopter visibility reduction below 1 SM NA. Procedure NA at night.</p> <p>▲ NA Use Philadelphia Intl altimeter setting.</p>	<p>MISSED APPROACH: Climbing right turn to 2100 direct OOD VORTAC and hold.</p>
---	---

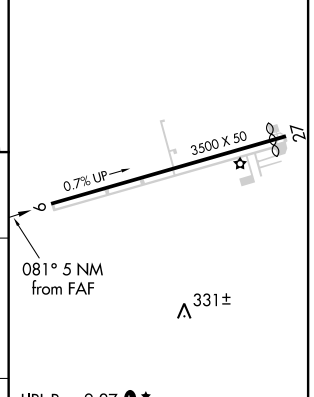
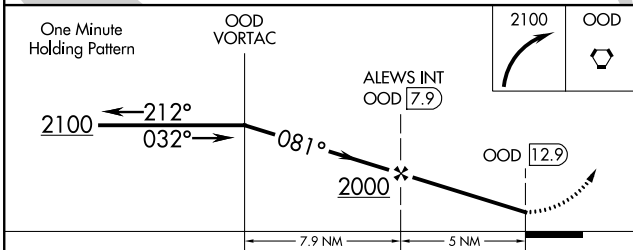
<p>PHILADELPHIA APP CON 127.35 133.875 317.55</p>	<p>UNICOM 122.8 (CTAF) 0 *</p>
--	---



NE-2, 10 SEP 2020 to 08 OCT 2020

NE-2, 10 SEP 2020 to 08 OCT 2020

ELEV 162	TDZE 162
----------	----------



CATEGORY	A	B	C	D
S-GPS 9	760-1	598 (600-1)		NA
CIRCLING	760-1 598 (600-1)	820-1 658 (700-1)		NA

FAF to MAP 5 NM					
Knots	60	90	120	150	180
Min:Sec	5:00	3:20	2:30	2:00	1:40