

APP CRS	Rwy Idg	N/A
122°	TDZE	N/A
	Apt Elev	1394

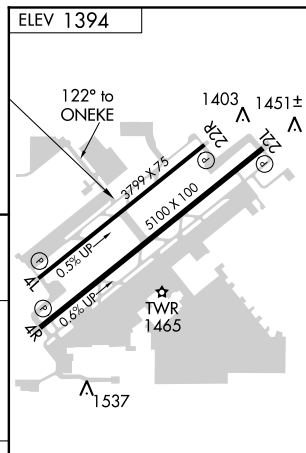
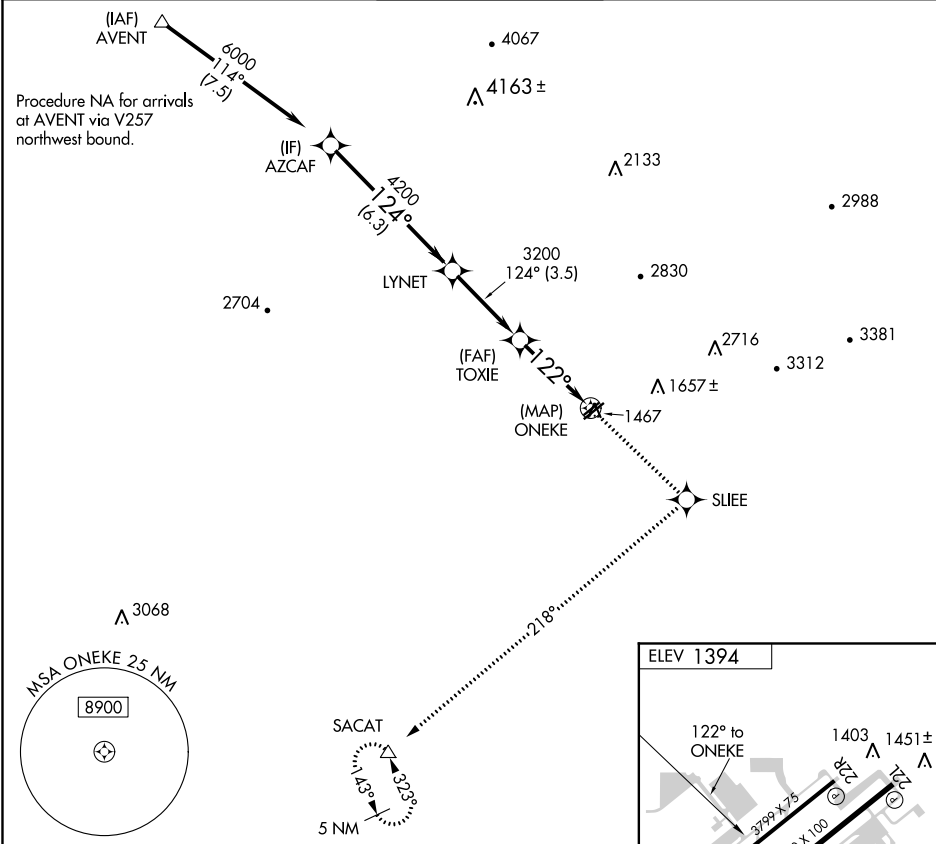
RNAV (GPS)-B

FALCON FIELD (F'F'Z)

▽ DME/DME RNP- 0.3 NA.
▲ When local altimeter setting not received, use Phoenix Sky Harbor Intl altimeter setting and increase all MDA 80 feet.

MISSED APPROACH: Climb to 5000 direct SLIEE and right turn on track 218° to SACAT and hold, continue climb-in-hold to 5000.

ATIS 118.25	PHOENIX APP CON 120.7 239.0	FALCON TOWER * 124.6 (CTAF) 0	GND CON 121.3	UNICOM 122.95
-----------------------	---------------------------------------	---	-------------------------	-------------------------



	AZCAF	LYNET	TOXIE	ONEKE	SACAT
	6000	4200	3200	1467	5000
	6.3 NM		3.5 NM	3.5 NM	
CATEGORY	A	B	C	D	
CIRCLING	1900-1	506 (600-1)	1900-1½ 506 (600-1½)	NA	

REIL Rwy 4R, 4L and 22R
 MIRL Rwy 4R-22L 0
 MIRL Rwy 4L-22R

SW-4, 10 SEP 2020 to 08 OCT 2020

SW-4, 10 SEP 2020 to 08 OCT 2020