

APP CRS	Rwy Idg	<b>2998</b>
<b>239°</b>	TDZE	<b>5</b>
	Apt Elev	<b>5</b>

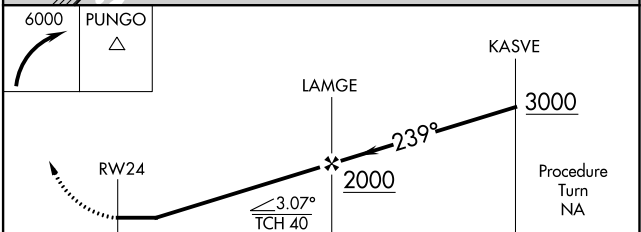
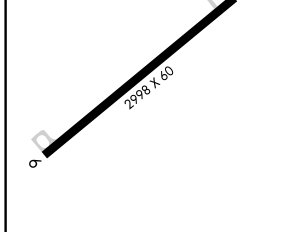
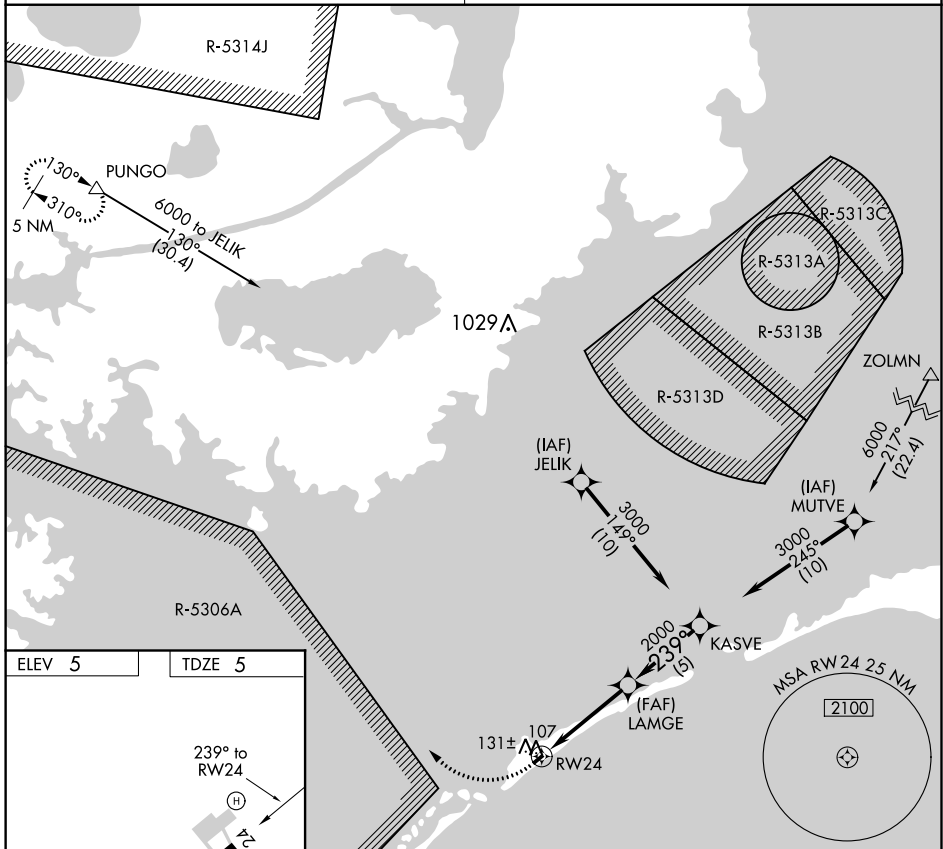
# RNAV (GPS) RWY 24

OCRACOKE ISLAND (W95)

**▲ NA** Procedure NA at night. Use Hatteras altimeter setting, when not received procedure NA. DME/DME RNP-0.3 NA. Helicopter visibility reduction below 1 SM NA.

MISSED APPROACH: Climbing right turn to 6000 direct PUNGO WP and hold.

CHERRY POINT APP CON	CTAF
<b>119.75 360.775</b>	<b>122.9</b>



CATEGORY	A	B	C	D
LNAV MDA	500-1	495 (500-1)		NA
CIRCLING	560-1	555 (600-1)		NA

SE-2, 10 SEP 2020 to 08 OCT 2020

SE-2, 10 SEP 2020 to 08 OCT 2020