

APP CRS	Rwy Idg	2998
059°	TDZE	5
	Apt Elev	5

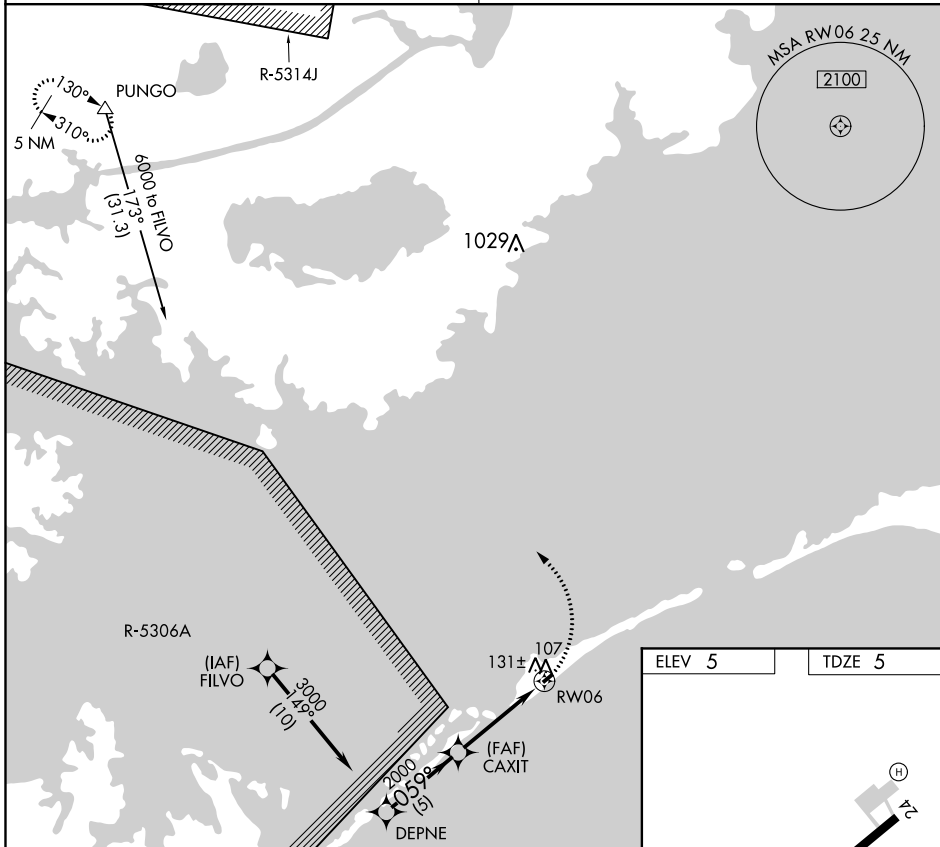
RNAV (GPS) RWY 6

OCRACOKE ISLAND (W95)

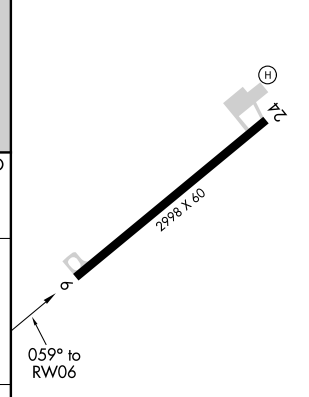
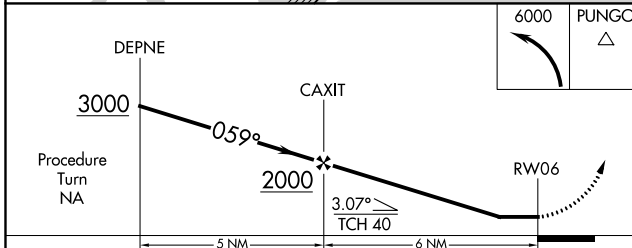
▲ NA Procedure NA at night. Use Hatters altimeter setting, when not received procedure NA. DME/DME RNP-0.3 NA. Helicopter visibility reduction below 1 SM NA.

MISSED APPROACH: Climbing left turn to 6000 direct PUNGO WP and hold.

CHERRY POINT APP CON 119.75 360.775	CTAF 122.9
---	----------------------



ELEV 5	TDZE 5
--------	--------



CATEGORY	A	B	C	D
LNAV MDA	500-1	495 (500-1)		NA
CIRCLING	560-1	555 (600-1)		NA

SE-2, 10 SEP 2020 to 08 OCT 2020

SE-2, 10 SEP 2020 to 08 OCT 2020