

APP CRS 291°	Rwy Idg TDZE Apt Elev	N/A N/A 732
------------------------	-----------------------------	--

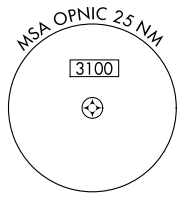
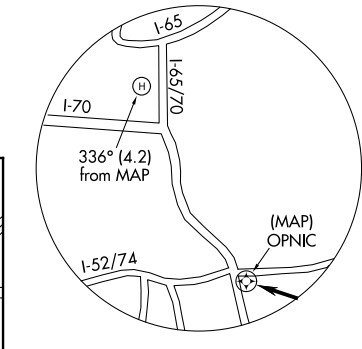
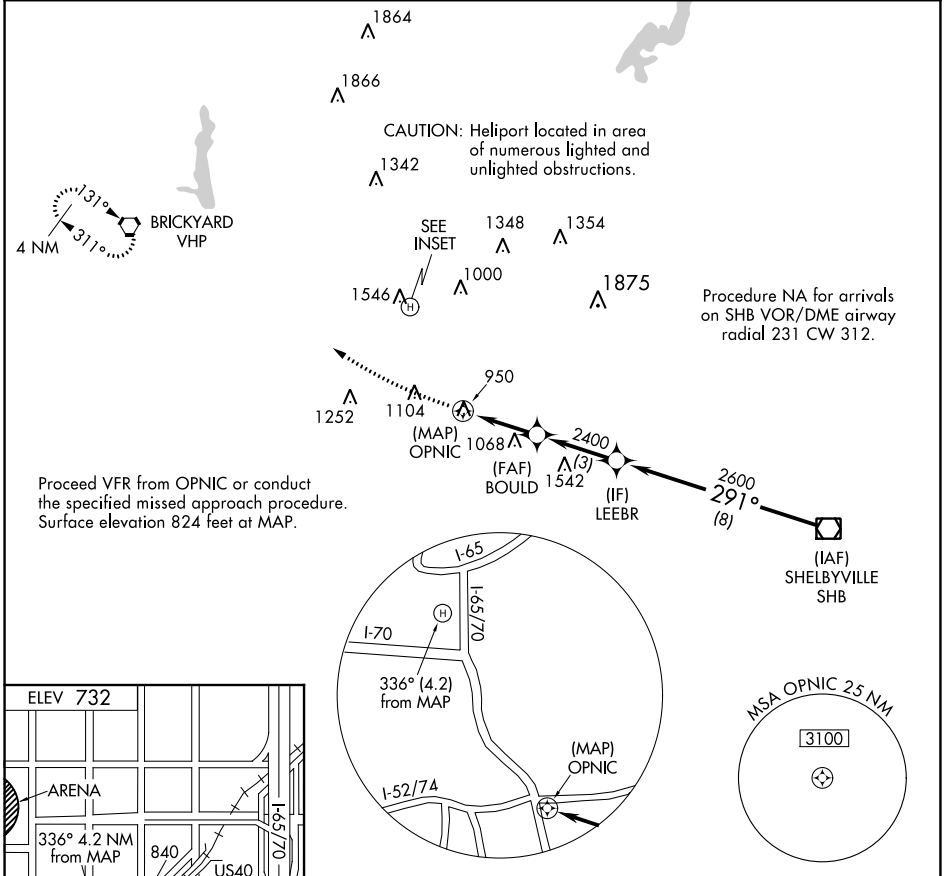
COPTER RNAV (GPS) 291°

INDIANAPOLIS DOWNTOWN HELIPORT (8A.4)

NA DME/DME RNP-0.3 NA. Limit final and missed approach airspeed to 70 KIAS. When local altimeter setting not received, use Indianapolis Intl altimeter setting and increase MDA 40 feet. **ACTIVATE** High Intensity Pad Lights-CTAF.

MISSED APPROACH: Climb to 1500 then climbing right turn to 3000 direct VHP VORTAC and hold.

AWOS-3 118.250	INDIANAPOLIS APP CON 125.275 317.8	UNICOM 123.05 (CTAF) 0
--------------------------	--	----------------------------------



1500	3000	VHP	LEEBR	SHB VOR/DME
↑		↻		
Proceed VFR from MAP		OPNIC	BOULD	
		2400	291°	2600
		291°	2600	2600
		2.8 NM	3 NM	8 NM
CATEGORY		COPTER		
LNAV MDA		1340- ³ / ₄ 1340 (1400- ³ / ₄)		

EC-2, 10 SEP 2020 to 08 OCT 2020

EC-2, 10 SEP 2020 to 08 OCT 2020