

VOR/DME SHB 112.0 Chan 57	APP CRS 287°	Rwy Idg TDZE Apt Elev N/A N/A 732
---	------------------------	---

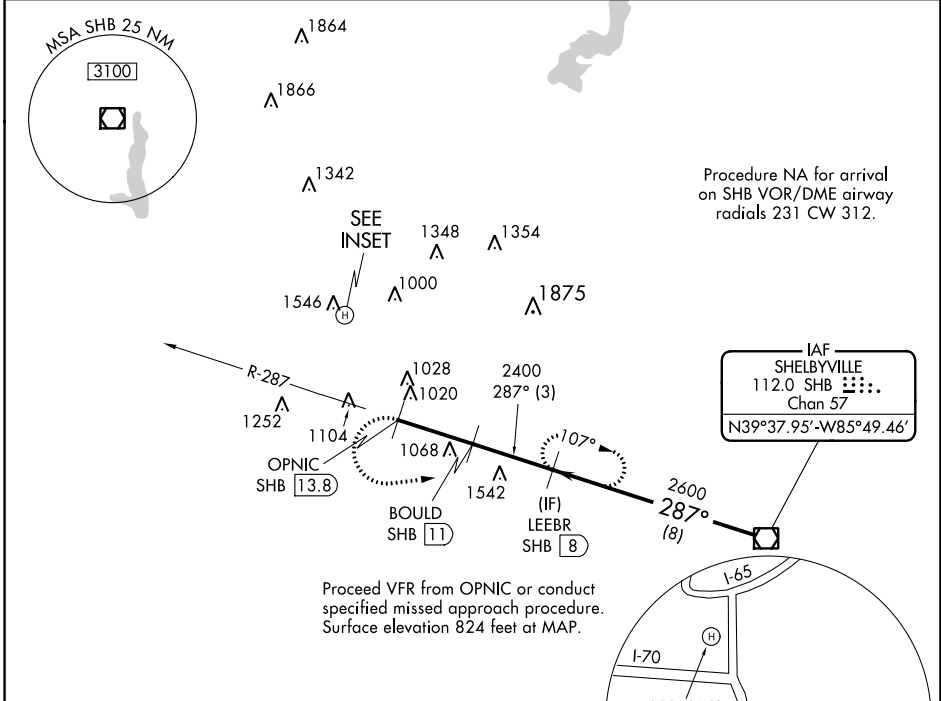
COPTER VOR/DME 287°

INDIANAPOLIS DOWNTOWN HELIPORT (8A.4)

▲ NA When local altimeter setting not received, use Indianapolis Intl altimeter setting and increase MDA 40 feet. **ACTIVATE High Intensity Pad Lights-CTAF.**

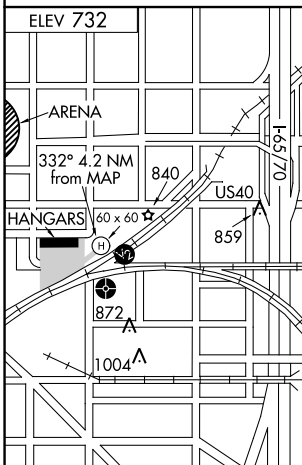
MISSED APPROACH: Climbing left turn to 2600 via SHB R-287 to LEEBR/SHB 8 DME and hold.

AWOS-3 118.250	INDIANAPOLIS APP CON 125.275 317.8	UNICOM 123.05 (CTAF) 0
--------------------------	--	----------------------------------

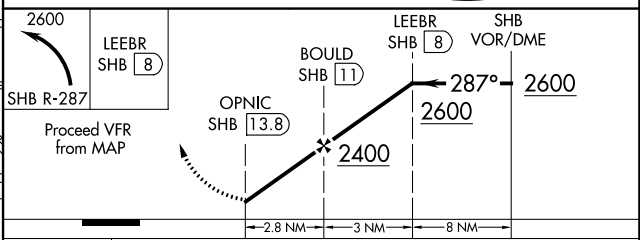


Procedure NA for arrival on SHB VOR/DME airway radials 231 CW 312.

Proceed VFR from OPNIC or conduct specified missed approach procedure. Surface elevation 824 feet at MAP.



CAUTION: Heliport located in area of numerous lighted and unlighted obstructions.



CATEGORY	COPTER
H-287°	1340-¾ 1340 (1400-¾)

EC-2, 10 SEP 2020 to 08 OCT 2020

EC-2, 10 SEP 2020 to 08 OCT 2020