

# RNAV (GPS) RWY 18

MADISONVILLE MUNI (51R)

APP CRS	Rwy Idg	<b>3202</b>
<b>183°</b>	TDZE	<b>287</b>
	Apt Elev	<b>287</b>

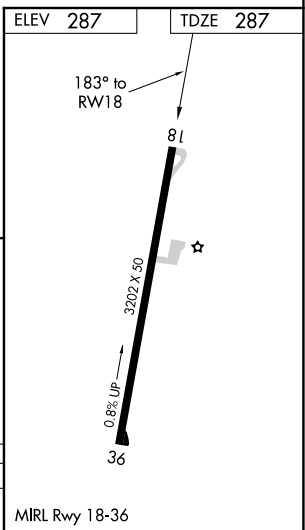
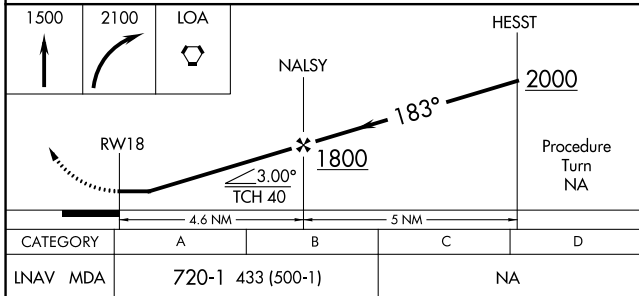
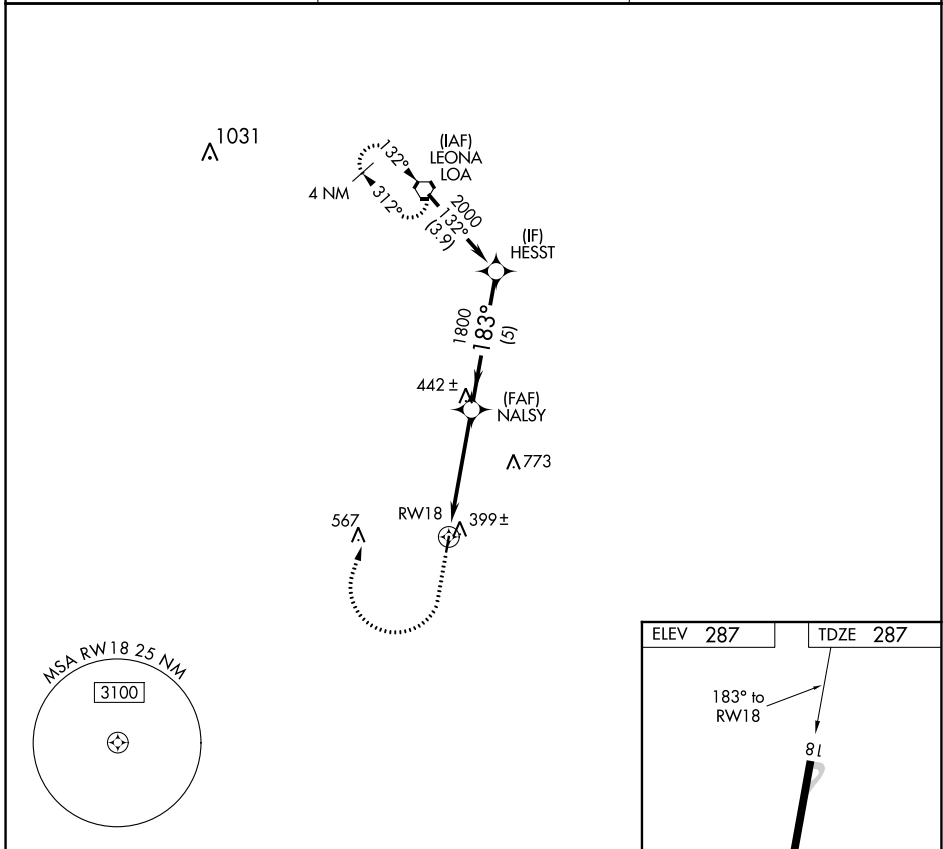
RNP APCH.

**▼** Use Huntsville Muni altimeter setting.

**▲ NA** Procedure NA at night.  
Rwy 18 helicopter visibility reduction below 1 SM NA.

MISSED APPROACH: Climb to 1500, then climbing right turn to 2100 direct LOA VORTAC and hold.

UTS ASOS	HOUSTON CENTER	CTAF
<b>119.425</b>	<b>134.8 269.6</b>	<b>122.9</b>



SC-5, 10 SEP 2020 to 08 OCT 2020

SC-5, 10 SEP 2020 to 08 OCT 2020