

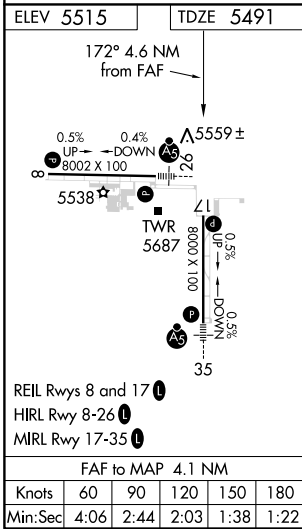
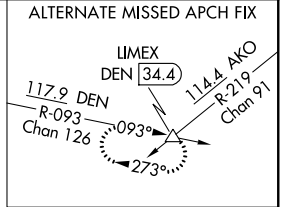
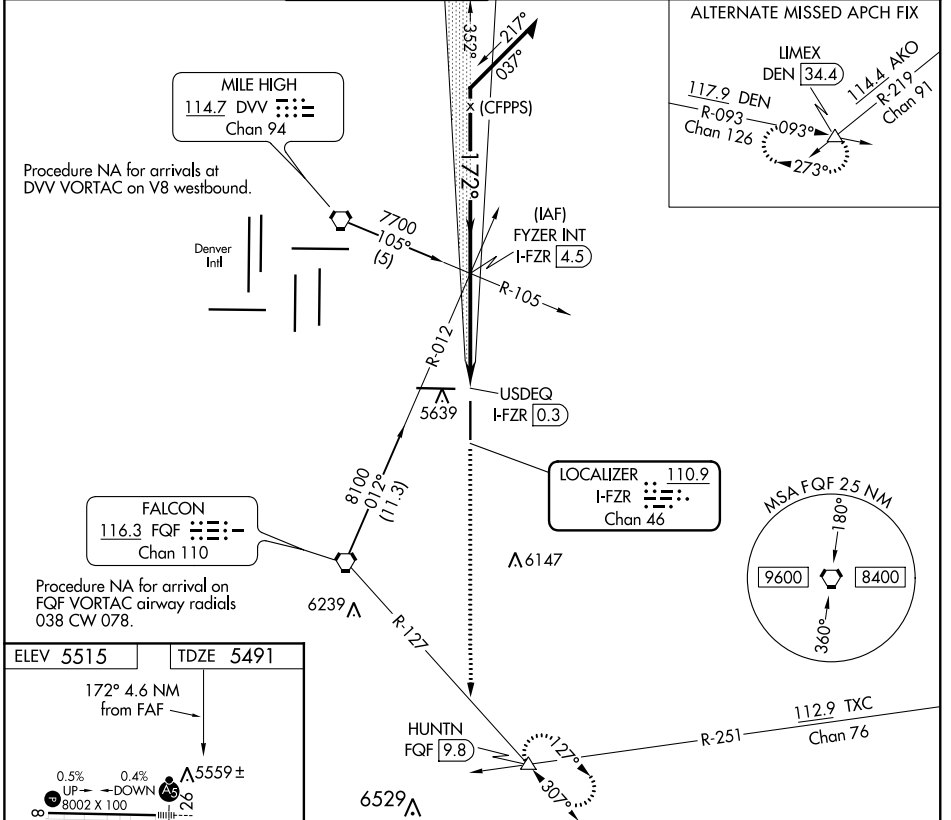
LOC/DME I-FZR 110.9 Chan 46	APP CRS 172°	Rwy Idg TDZE Apt Elev	8000 5491 5515
--	------------------------	-----------------------------	---

ILS or LOC RWY 17

COLORADO AIR AND SPACE PORT (CFO)

MISSED APPROACH: Climb to 8500 on heading 172° and FQG VORTAC R-127 to HUNTN INT/FQG 9.8 DME and hold.

ATIS 119.025	DENVER APP CON 128.25 371.95	FRONT RANGE TOWER* 120.2 (CTAF)	GND CON 124.7	CLNC DEL 124.7	CLNC DEL 121.75 (When twr closed)	UNICOM 122.95
------------------------	--	---	-------------------------	--------------------------	--	-------------------------



Remain within 10 NM	FYZER INT I-FZR 4.5	8500 hdg 172°	FQG R-127	HUNTN
7000	7000	USDEQ I-FZR 0.3	I-FZR DME ANTENNA	
GS 3.00° TCH 55	7000	4.1 NM	0.5 NM	
CATEGORY	A	B	C	D
S-ILS 17	5691-¾ 200 (200-¾)			
S-LOC 17	5820-1 329 (400-1)			
<input checked="" type="checkbox"/> CIRCLING	6000-1	485 (500-1)	6100-1½ 585 (600-1½)	6300-2½ 785 (800-2½)

SW-1, 10 SEP 2020 to 08 OCT 2020

SW-1, 10 SEP 2020 to 08 OCT 2020