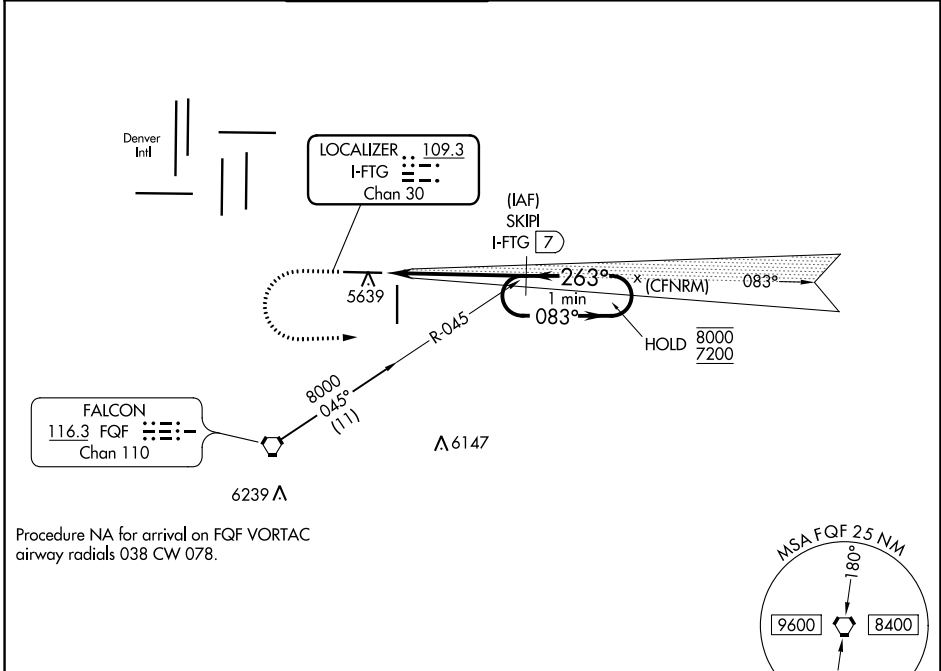


LOC/DME I-FTG 109.3 Chan 30	APP CRS 263°	Rwy Idg TDZE Apt Elev	8002 5489 5515
--	------------------------	-----------------------------	---

ILS or LOC RWY 26

COLORADO AIR AND SPACE PORT (CFO)

DME required.		MALSR	MISSED APPROACH: Climb to 6100 then climbing left turn to 7200 on heading 080° and on FQF VORTAC R-045 to SKIPI/I-FTG 7 DME and hold.			
<p>For inop ALS, increase S-LOC 26 Cat C/D visibility to 1 1/8 SM.</p>			GND CON 124.7	CLNC DEL 124.7	CLNC DEL 121.75 (When twr closed)	UNICOM 122.95
ATIS 119.025	DENVER APP CON 128.25 371.95	FRONT RANGE TOWER* 120.2 (CTAF)				



Procedure NA for arrival on FQF VORTAC airway radials 038 CW 078.

ELEV 5515	TDZE 5489	△ 6529				
		6100	7200	FQF R-045	SKIPI I-FTG (7)	SKIPI I-FTG (7)
		*LOC only		One Minute Holding Pattern		
				7200 083° → 8000 ← 263° 7200 GS 3.00° TCH 50		
		CATEGORY	A	B	C	D
		S-ILS 26	5689-1/2 200 (200-1/2)			
		S-LOC 26	5900-1/2 411 (400-1/2)		5900-3/4 411 (400-3/4)	
		CIRCLING	6000-1 485 (500-1)		6100-1 1/2 585 (600-1 1/2) 6300-2 1/2 785 (800-2 1/2)	

- REIL Rwy 8 and 17
- HIRL Rwy 8-26
- MIRL Rwy 17-35

SW-1, 10 SEP 2020 to 08 OCT 2020

SW-1, 10 SEP 2020 to 08 OCT 2020