

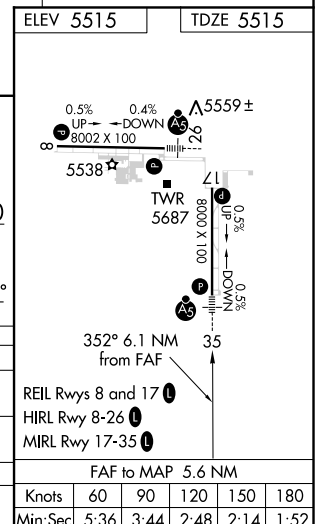
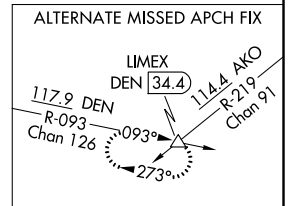
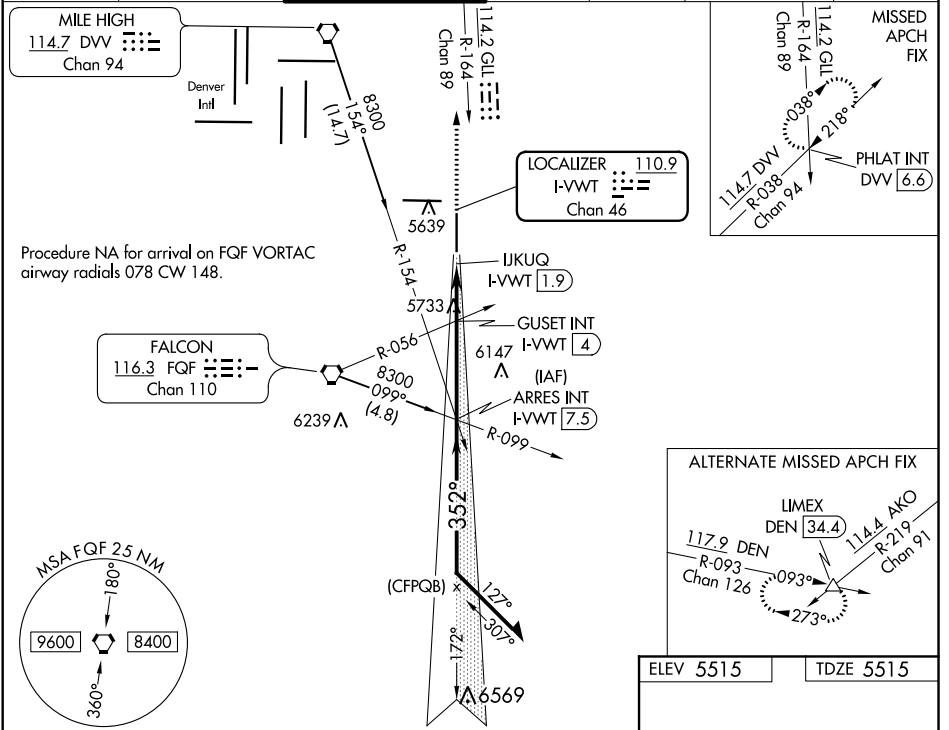
LOC/DME I-VVWT 110.9 Chan 46	APP CRS 352°	Rwy Idg TDZE Apt Elev 8000 5515 5515
--------------------------------------------------	------------------------	--------------------------------------------------------------------------

ILS or LOC RWY 35

COLORADO AIR AND SPACE PORT (CFO)

For inop ALS, increase S-LOC 35 Cats C and D visibility to 2½ SM.	MALSR	MISSED APPROACH: Climb to 7500 on heading 352° and on GLL VOR/DME R-164 to PHLAT INT/VVWT 6.6 DME and hold.		

ATIS 119.025	DENVER APP CON 128.25 371.95	FRONT RANGE TOWER* 120.2 (CTAF)	GND CON 124.7	CLNC DEL 124.7	CLNC DEL 121.75 (When twr closed)	UNICOM 122.95
------------------------	----------------------------------------	-------------------------------------------	-------------------------	--------------------------	------------------------------------------------	-------------------------



7500	GLL R-164	PHLAT INT	ARRES INT I-VVWT 7.5	Remain within 10 NM
hdg 352°				
*LOC only				
IJKUQ I-VVWT 1.9				
	*I-VVWT 3			
		Guset Int I-VVWT 4		
			7500	
				7900
				7500
				GS 3.00°
				TCH 54
CATEGORY	A	B	C	D
S-ILS 35	5715-½		200 (200-½)	
S-LOC 35	6300-½ 785 (800-½)	6300-¾ 785 (800-¾)	6300-1¾ 785 (800-1¾)	
Guset Fix Minimums (Dual VOR Receivers or DME Required)				
S-LOC 35	6040-½	525 (600-½)	6040-1	525 (600-1)

SW-1, 10 SEP 2020 to 08 OCT 2020

SW-1, 10 SEP 2020 to 08 OCT 2020