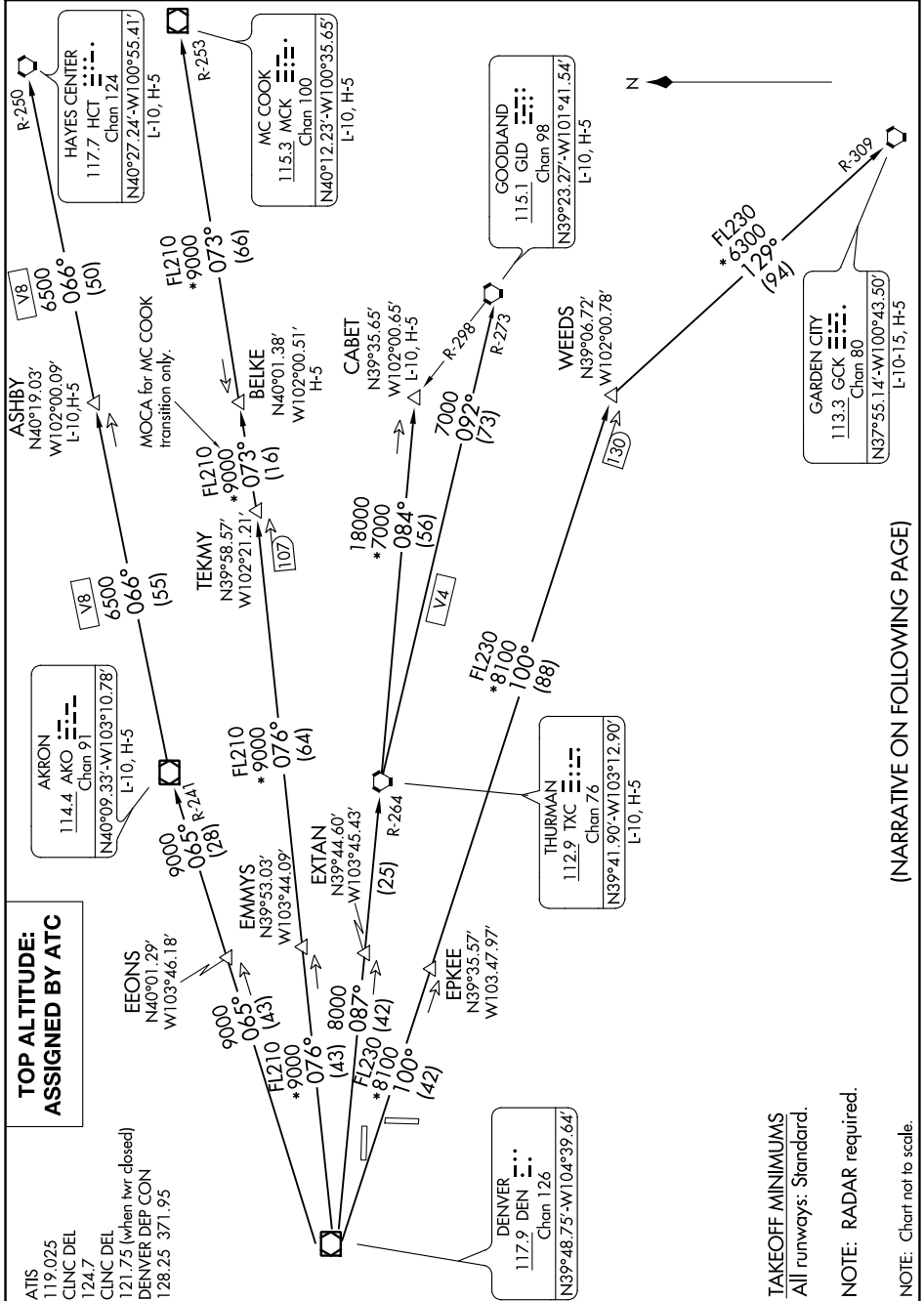


PLAINS ONE DEPARTURE

AL-6851 (FAA)

COLORADO AIR AND SPACE PORT (CFO)
DENVER, COLORADO

SW-1, 10 SEP 2020 to 08 OCT 2020



**TOP ALTITUDE:
ASSIGNED BY ATC**

ATIS 119.025
 CLINC DEL 124.7
 CLINC DEL 121.75 (when hwr. closed)
 DENVER DEP CON 128.25-371.95

PLAINS ONE DEPARTURE

DENVER, COLORADO
COLORADO AIR AND SPACE PORT (CFO)

TAKEOFF MINIMUMS
All runways: Standard.

NOTE: RADAR required.

NOTE: Chart not to scale.

(NARRATIVE ON FOLLOWING PAGE)

SW-1, 10 SEP 2020 to 08 OCT 2020