

WAAS CH <b>82209</b> <b>W17A</b>	APP CRS <b>172°</b>	Rwy Idg TDZE Apt Elev	<b>8000</b> <b>5491</b> <b>5515</b>
--	------------------------	-----------------------------	---

# RNAV (GPS) RWY 17

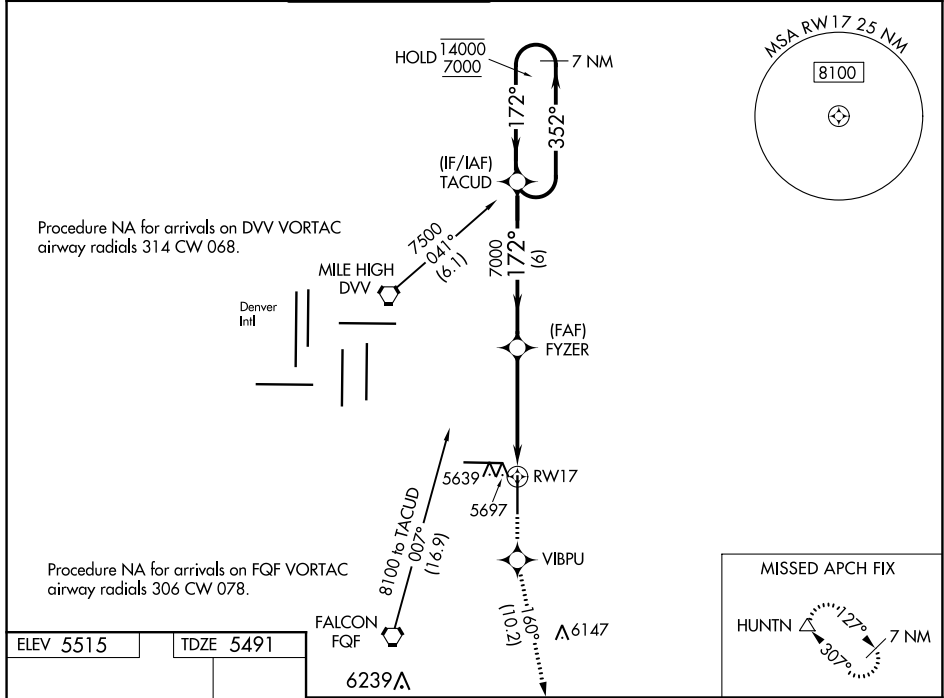
COLORADO AIR AND SPACE PORT (CFO)

RNP APCH.

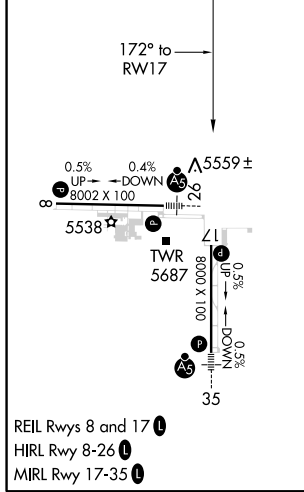
**▽** For uncompensated Baro-VNAV systems, LNAV/VNAV NA below  
**▲** -25°C or above 48°C.

MISSED APPROACH: Climb to 8500 direct VIBPU and on track 160° to HUNTN and hold.

ATIS <b>119.025</b>	DENVER APP CON <b>128.25 371.95</b>	FRONT RANGE TOWER* <b>120.2 (CTAF) 0</b>	GND CON <b>124.7</b>	CLNC DEL <b>124.7</b>	CLNC DEL <b>121.75</b> (When twr closed)	UNICOM <b>122.95</b>
------------------------	--	---	-------------------------	--------------------------	--	-------------------------



ELEV 5515	TDZE 5491
-----------	-----------



7 NM Holding Pattern	TACUD	FYZER	8500	VIBPU	tr 160°	HUNTN
14000 7000	←352°	→172°	7000	*1.5 NM to RWY17	*LNAV only	RWY17
GP 3.00° TCH 55	←6 NM	→3.1 NM	→1.5 NM			
CATEGORY	A	B	C	D		
LPV DA		5691- <sup>3</sup> / <sub>4</sub>	200 (200- <sup>3</sup> / <sub>4</sub> )			
LNAV/VNAV DA		5916-1 <sup>3</sup> / <sub>8</sub>	425 (500-1 <sup>3</sup> / <sub>8</sub> )			
LNAV MDA	6000-1	509 (500-1)	6000-1 <sup>1</sup> / <sub>2</sub>	509 (500-1 <sup>1</sup> / <sub>2</sub> )		
<b>C</b> CIRCLING	6000-1	485 (500-1)	6100-1 <sup>1</sup> / <sub>2</sub> 585 (600-1 <sup>1</sup> / <sub>2</sub> )	6300-2 <sup>1</sup> / <sub>2</sub> 785 (800-2 <sup>1</sup> / <sub>2</sub> )		

SW-1, 10 SEP 2020 to 08 OCT 2020

SW-1, 10 SEP 2020 to 08 OCT 2020