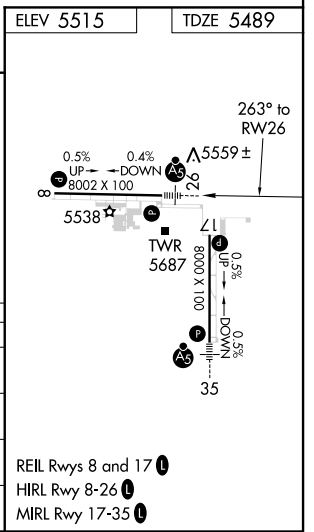
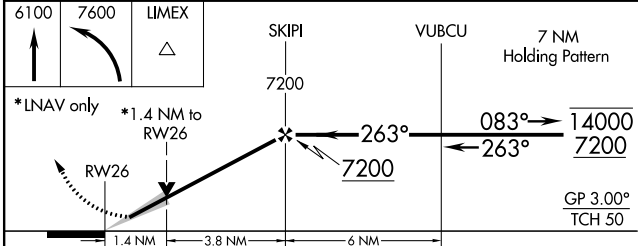
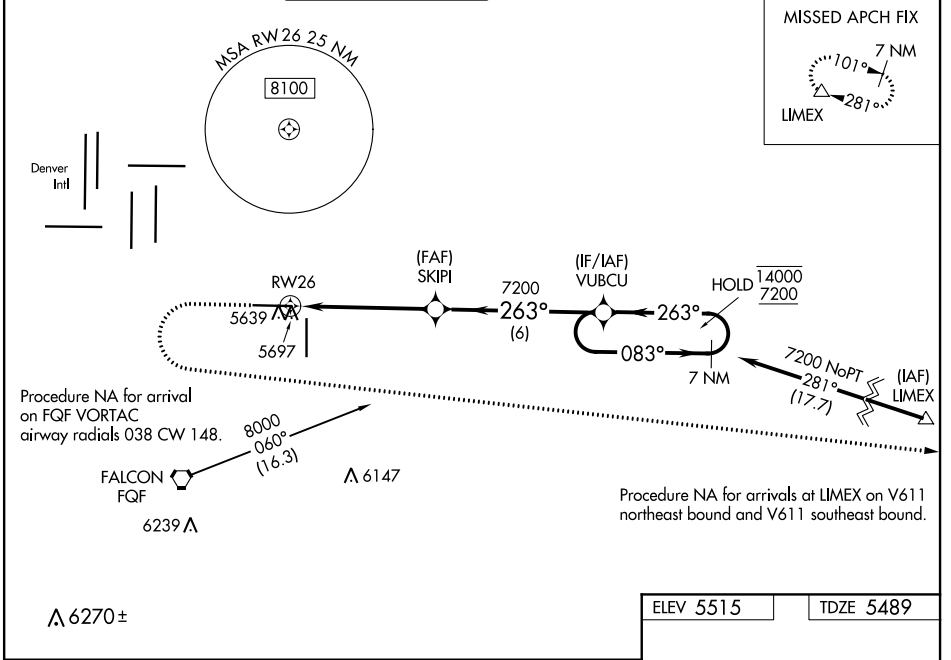


WAAS CH <b>93909</b> <b>W26A</b>	APP CRS <b>263°</b>	Rwy Idg <b>8002</b> TDZE <b>5489</b> Apt Elev <b>5515</b>
--	------------------------	---

# RNAV (GPS) RWY 26

COLORADO AIR AND SPACE PORT (CFO)

RNP APCH.		FRONT RANGE TOWER* <b>120.2 (CTAF)</b>		GND CON <b>124.7</b>	CLNC DEL <b>124.7</b>	CLNC DEL <b>121.75</b> (When twr closed)	UNICOM <b>122.95</b>
<p><b>⚠</b> For uncompensated Baro-VNAV systems, LNAV/VNAV NA below -25°C or above 48°C. For inop ALS, increase LNAV/VNAV all Cats visibility to 1½ SM, and increase LNAV Cat C/D visibility to 1½ SM.</p>		<p>MALSRL</p> <p>MISSED APPROACH: (Do not exceed 200K until LIMEX) Climb to 6100 then climbing left turn to 7600 direct LIMEX and hold.</p>					



CATEGORY	A	B	C	D
LPV DA	5689-½		200 (200-½)	
LNAV/VNAV DA	5858-¾		369 (400-¾)	
LNAV MDA	5960-½ 471 (500-½)		5960-1 471 (500-1)	
CIRCLING	6000-1 485 (500-1)		6100-1½ 585 (600-1½) 6300-2½ 785 (800-2½)	

SW-1, 10 SEP 2020 to 08 OCT 2020

SW-1, 10 SEP 2020 to 08 OCT 2020