

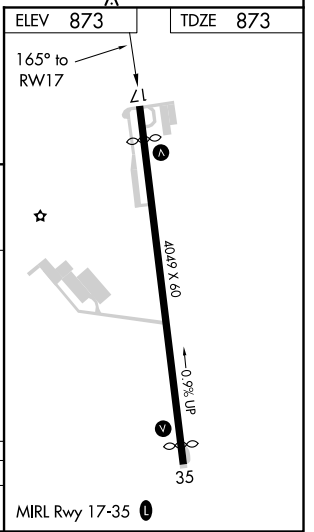
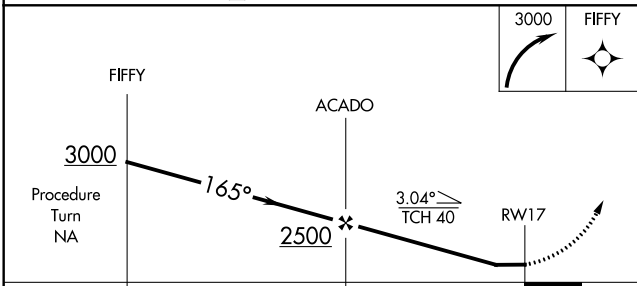
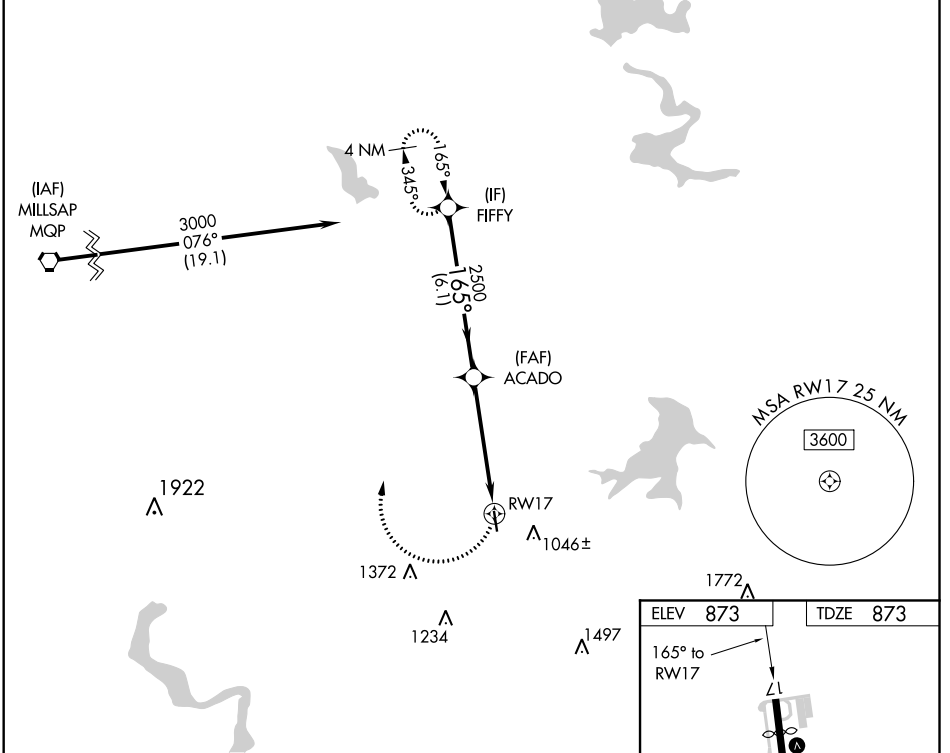
APP CRS	Rwy Idg	3657
165°	TDZE	873
	Apt Elev	873

RNAV (GPS) RWY 17

BOURLAND FIELD (50F)

RNP APCH.	Rwy 17 helicopter visibility reduction below 1 SM NA. Use Cleburne altimeter setting, when not received, use Fort Worth Meacham Intl altimeter setting and increase all MDA 40 feet, increase LNAV Cat C visibility 1/2 SM. Procedure NA at night.	MISSED APPROACH: Climbing right turn to 3000 direct FIFFY and hold.
⚠ NA		

CPT AWOS-3 119.525	REGIONAL APP CON 135.975 379.9	UNICOM 123.0 (CTAF) 0
------------------------------	--	---------------------------------



CATEGORY	A	B	C	D
LNAV MDA	1520-1	647 (700-1)	1520-1 ³ / ₄ 647 (700-1 ³ / ₄)	NA

SC-2, 10 SEP 2020 to 08 OCT 2020

SC-2, 10 SEP 2020 to 08 OCT 2020