

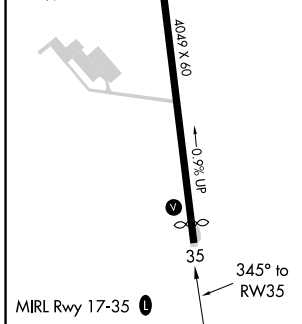
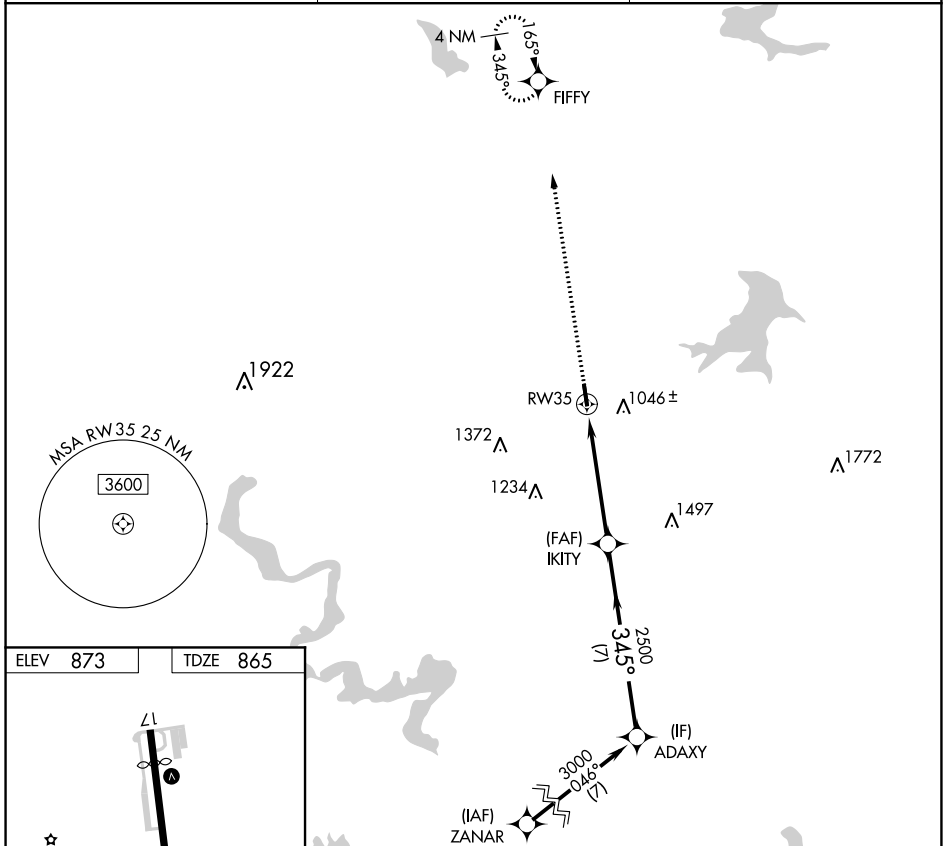
APP CRS 345°	Rwy Idg 3834
	TDZE 865
	Apt Elev 873

RNAV (GPS) RWY 35

BOURLAND FIELD (50F)

RNP APCH.	Rwy 35 helicopter visibility reduction below 1 SM NA. Procedure NA at night.	MISSED APPROACH: Climb to 3000 direct FIFFY and hold.
-----------	---------------------------------------------------------------------------------	-------------------------------------------------------

CPT AWOS-3 119.525	REGIONAL APP CON 135.975 379.9	UNICOM 123.0 (CTAF)
------------------------------	------------------------------------------	-------------------------------



3000	FIFFY	VGS1 and descent angles not coincident (VGS1 Angle 3.00/TCH 24).		ADAXY
		IKITY	3000	
	RW35	≤ 3.00° TCH 40	2500	
		5.1 NM	7 NM	
CATEGORY	A	B	C	D
LNAV MDA	1560-1	695 (700-1)	1560-2 695 (700-2)	NA
CIRCLING	1580-1	707 (800-1)	1680-2¼ 807 (900-2¼)	NA

SC-2, 10 SEP 2020 to 08 OCT 2020

SC-2, 10 SEP 2020 to 08 OCT 2020