

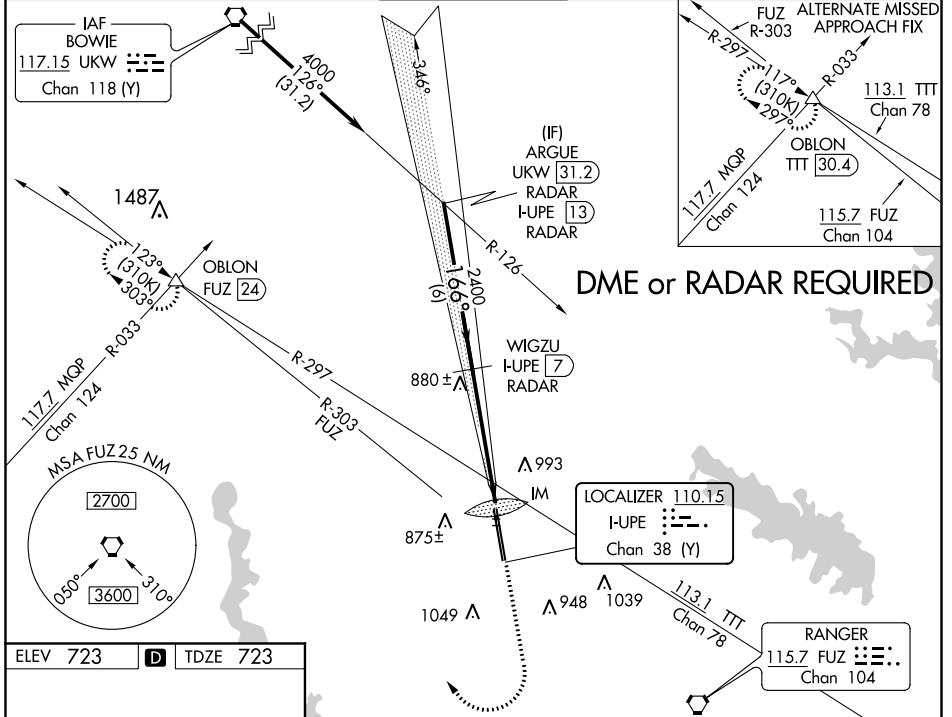
LOC/DME I-UIPE 110.15 Chan 38 (Y)	APP CRS 166°	Rwy Idg 10600 TDZE 723 Apt Elev 723
---	------------------------	--

ILS RWY 16L (CAT II & III)

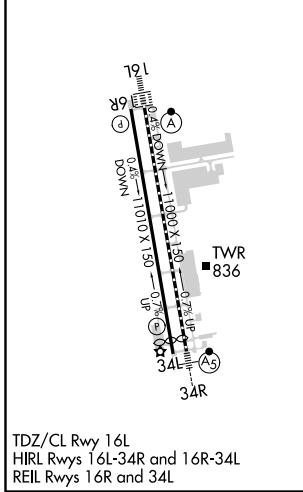
FORT WORTH ALLIANCE (AFW)

	ALS F2	MISSED APPROACH: Climb to 1200 then climbing right turn to 3000 on heading 330° and FUZ VORTAC R-303 to OBLON INT/FUZ 24 DME and hold.

ATIS 126.925	REGIONAL APP CON 118.1 306.95	ALLIANCE TOWER 135.15 257.9	GND CON 132.65 306.2	CLNC DEL 128.725
------------------------	---	---------------------------------------	--------------------------------	----------------------------



ELEV 723	D	TDZE 723
----------	----------	----------



ARGUE I-UIPE [13] RADAR	WIGZU I-UIPE [7] RADAR	1200	3000	OBLON
<p>4000 — 166° — 2400</p> <p>GS 3.00° TCH 55</p> <p>6 NM 5.1 NM 1049'</p>		<p>↑</p> <p>hdg 330°</p> <p>FUZ R-303</p>	<p>IM</p> <p>797</p>	
CATEGORY	A	B	C	D
S-ILS 16L	CAT II RA 101/12		100 DA 823	
S-ILS 16L	CAT III		RVR 06	

CATEGORY II & III ILS - SPECIAL AIRCREW & AIRCRAFT CERTIFICATION REQUIRED

SC-2, 10 SEP 2020 to 08 OCT 2020

SC-2, 10 SEP 2020 to 08 OCT 2020